
Improving Big Data Visual Analytics with Interactive Virtual Reality

Andrew Moran, Vijay Gadepally, Matthew Hubbell, Jeremy Kepner

IEEE High Performance Extreme Computing Conference

September 15-17, 2015

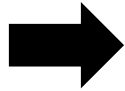


This work is sponsored by the Assistant Secretary of Defense for Research & Engineering under Air Force Contract #FA8721-05-C-0002. The U.S. Government is authorized to reproduce and distribute reprints for Governmental purposes notwithstanding any copyright annotation thereon.

Disclaimer: Opinions, interpretations, conclusions and recommendations are those of the author and are not necessarily endorsed by the United States Government



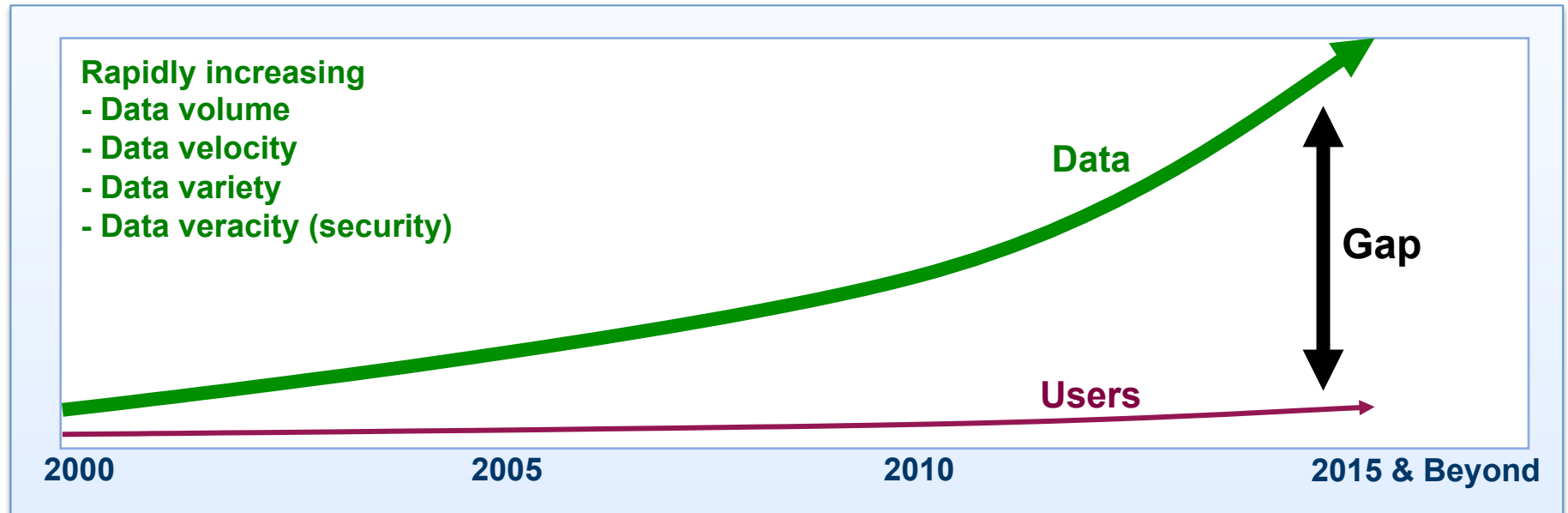
Outline



- **Introduction**
 - **Big Data**
 - **Visualization**
 - **Virtual Reality**
- **Approach**
 - Data Extraction
 - Game Configuration
 - Utilized Technologies
- **Results**
 - Virtual Environment
 - Analytical Tasks
 - Challenges
- **Summary, Future Work and Next Steps**



Big Data

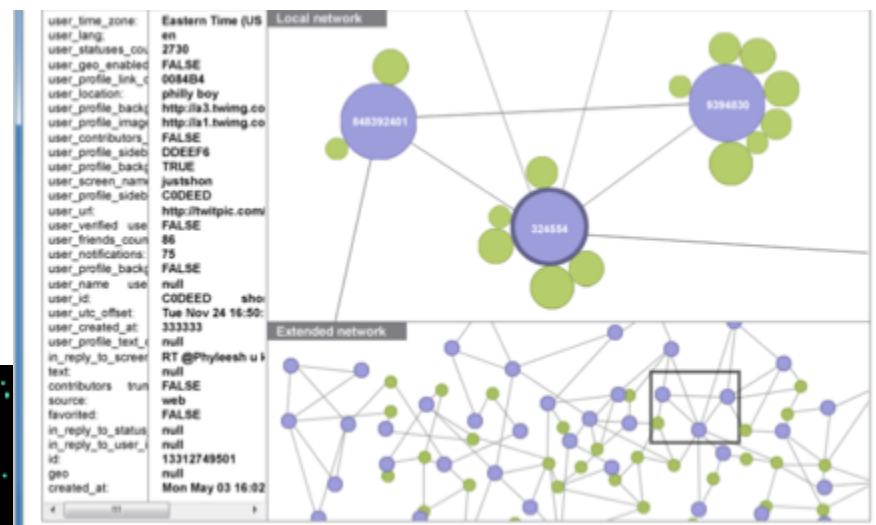
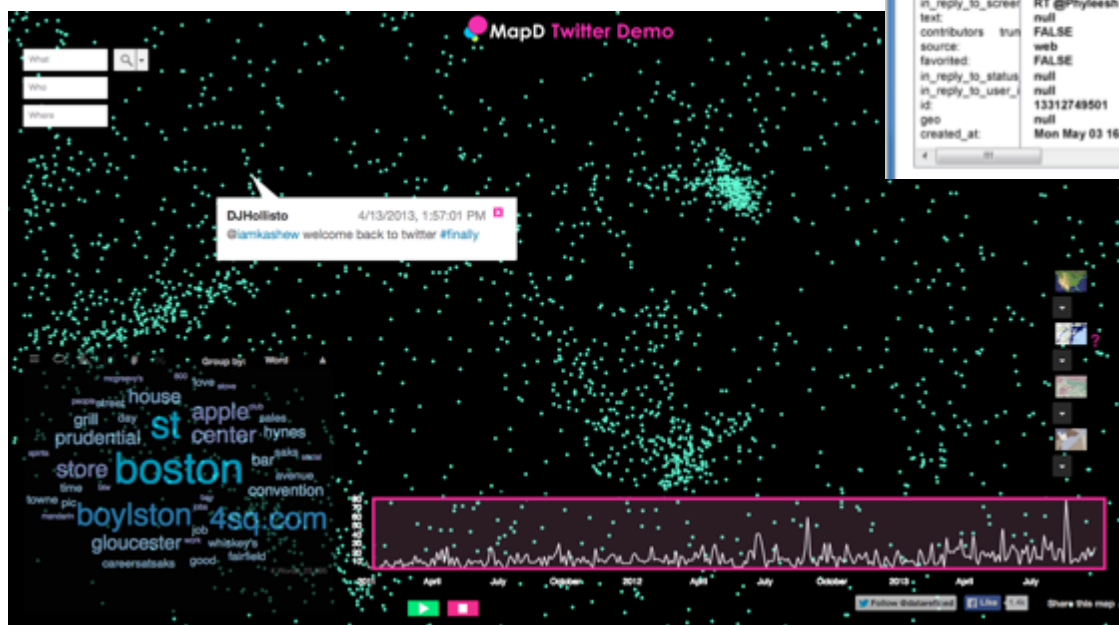


- **Unstructured and overly complex**
- **Difficult to detect patterns**
- **Challenges in understanding/interaction**



Visualization

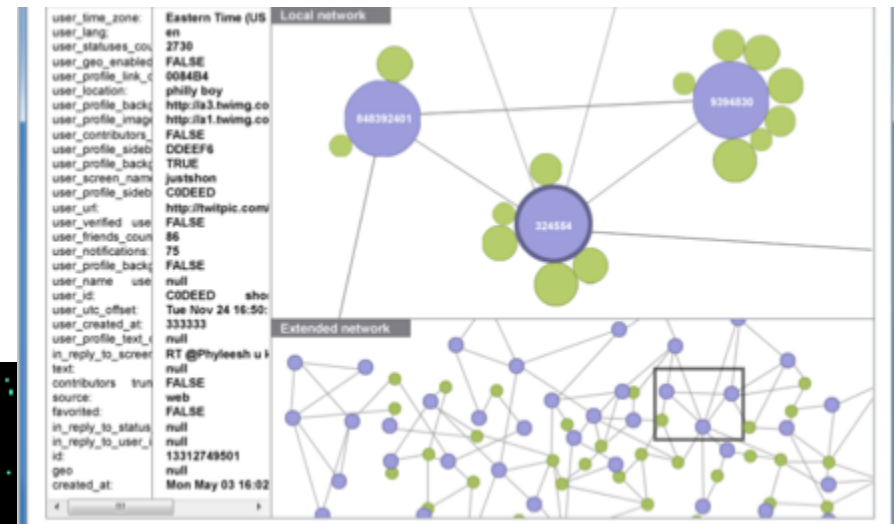
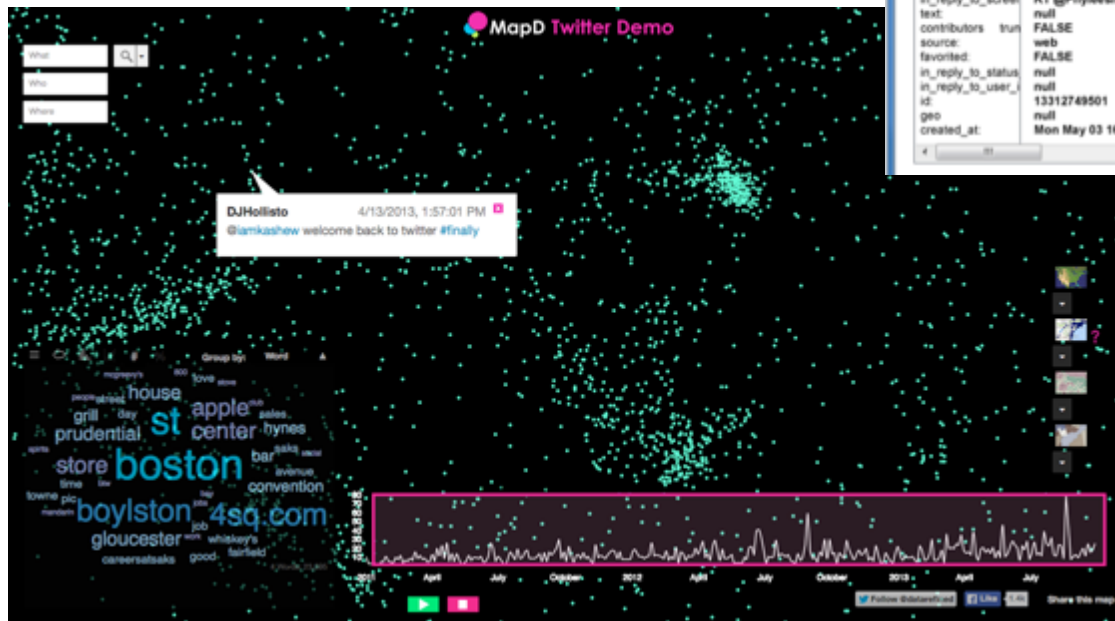
- Display Analytics
- Enable Exploration
- Draw Conclusions Faster





Visualization

- Display Analytics
- Enable Exploration
- Draw Conclusions Faster



- Two-Dimensional
- Limited Perception
- Context

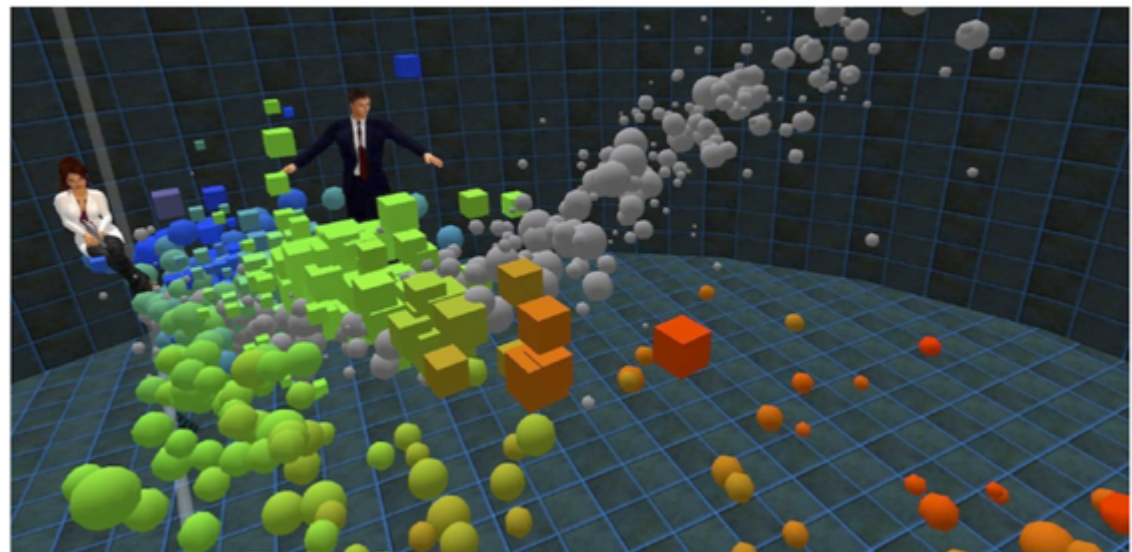


Virtual Reality

- **Sustainable Interaction**
- **Natural Movement**
- **Less Restriction**

- **First Person Perspectives**
- **Multi-Dimensional Data**
- **Immersive Gameplay**
- **Additional Context**

Oculus RIFT





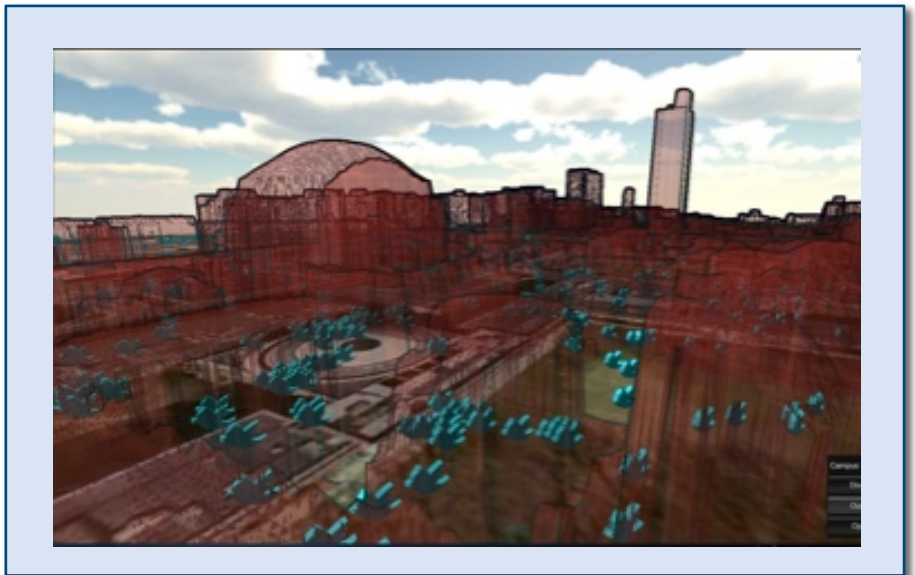
Outline

- Introduction
 - Big Data
 - Visualization
 - Virtual Reality
- ➔ • **Approach**
 - **Data Extraction**
 - **Game Configuration**
 - **Utilized Technologies**
- Results
 - Virtual Environment
 - Analytical Tasks
 - Challenges
- Summary, Future Work and Next Steps



Approach

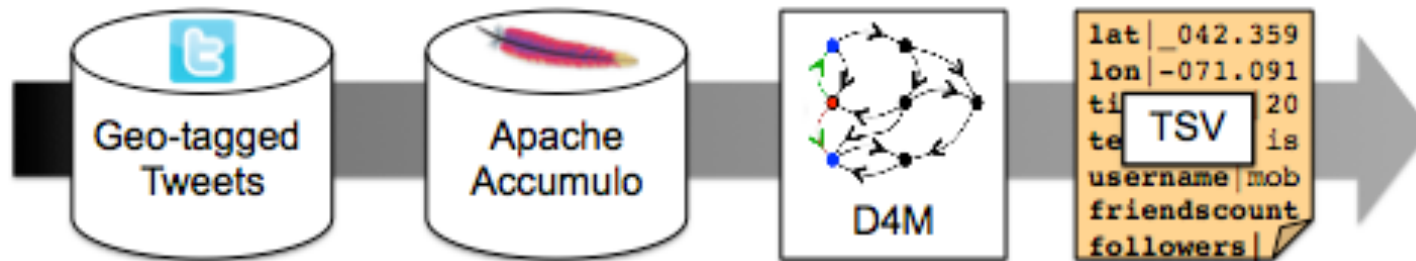
- **Bridge the gap between data volume and user interaction through immersive technologies**
- **Enhance data visualization with additional context**
- **Appeal to the growth of 3D game development and virtual reality**
- **Scenario: Visualize Twitter at MIT**
 - **Why Twitter?**
 - Large Data Set
 - Popularity
 - **Why MIT?**
 - Familiarity
 - Geographical Basis





Data Extraction, Tweets

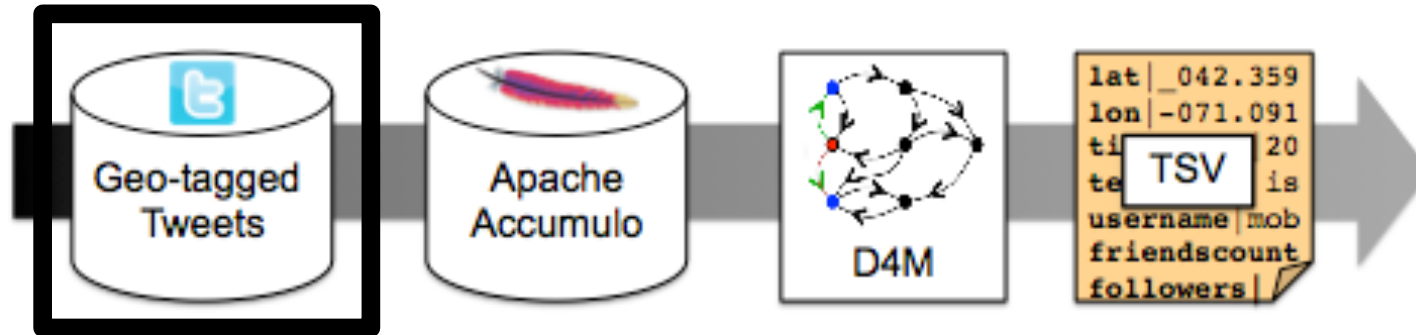
Process Pipeline for Twitter Data





Data Extraction, Tweets

Process Pipeline for Twitter Data



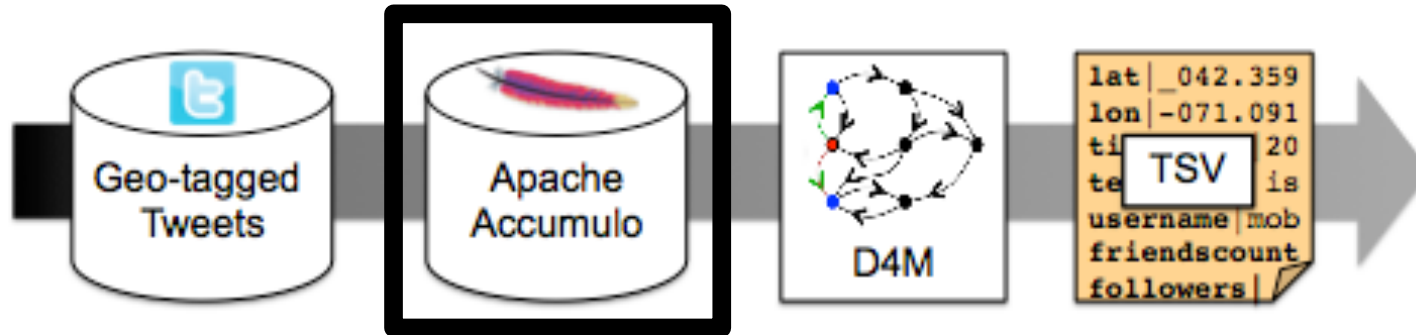
Twitter Decahose

TweetID	Time	Lat	Long	User	Source	Text
334458513407488001	2013-05-15 00:01:38	41.50442327	-71.3080676	alesiatasso	Twitter for iPhone	@LM_Rudd okay, I'm...
334458512308576256	2013-05-15 00:01:37	42.56289604	-84.82935883	skally_pal	Twitter for iPhone	@ItsMackk I'll see you...
334458513755602944	2013-05-15 00:01:38	41.39560229	-81.73950863	AmbahDee	Twitter for iPhone	@NataliaProkop come...
334458515798245377	2013-05-15 00:01:38	37.19058402	-93.31629432	RockSteady	Twitter for iPhone	@ktp35 I didn't think to...
334458515383005184	2013-05-15 00:01:38	35.6337457	139.6607298	karate_h	Twitter for Android	""@IngatanSekolah: ...
334458520244219904	2013-05-15 00:01:39	42.2041867	-87.8126571	yobebeau	Endomondo	Was out cycling 31.64 ...
...

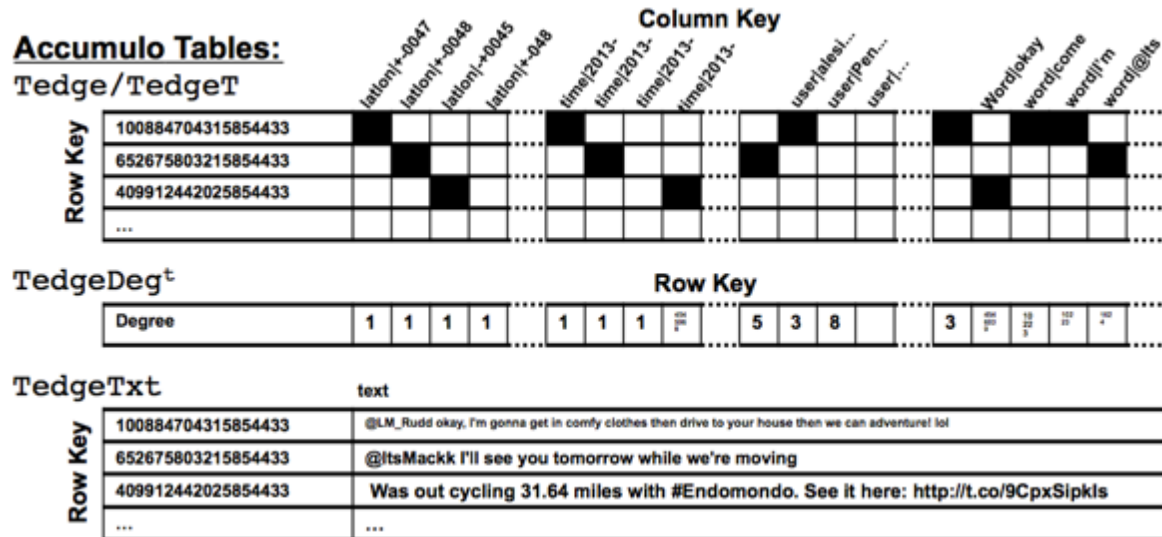


Data Extraction, Tweets

Process Pipeline for Twitter Data



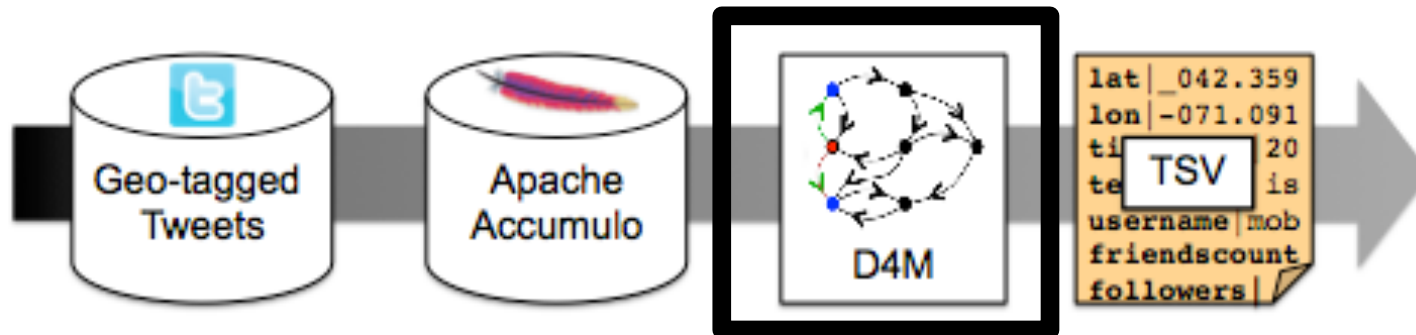
Apache Accumulo





Data Extraction, Tweets

Process Pipeline for Twitter Data



D4M (Dynamic Distributed Dimensional Data Model)

- **Restricted within MIT**

```
Amit = Tedge(:, ['lon|,-71.090, :, -71.099, ' ] ...  
                ['lat|,42.350, :, 42.357, ' ]);
```

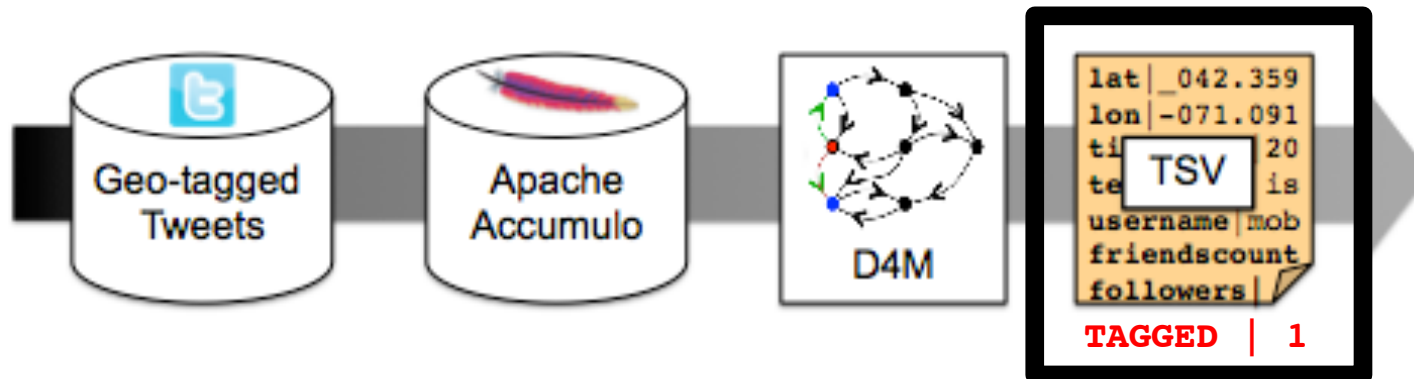
- **Contains the word “danger”**

```
Atagged = Amit(:, StartsWith('word|danger, '));
```



Data Extraction, Tweets

Process Pipeline for Twitter Data



D4M (Dynamic Distributed Dimensional Data Model)

↓
TSV

- Restricted within MIT

```
Amit = Tedge(:, ['lon|,-71.090, :,-71.099, ' ] ...  
                ['lat|,42.350, :,42.357, ' ]);
```

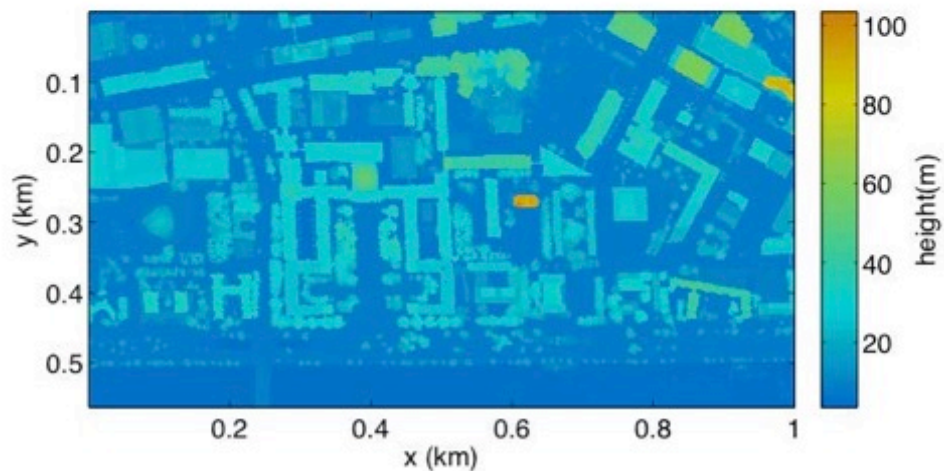
- Contains the word “danger”

TAGGED | 1

```
Atagged = Amit(:, StartsWith('word|danger, '));
```

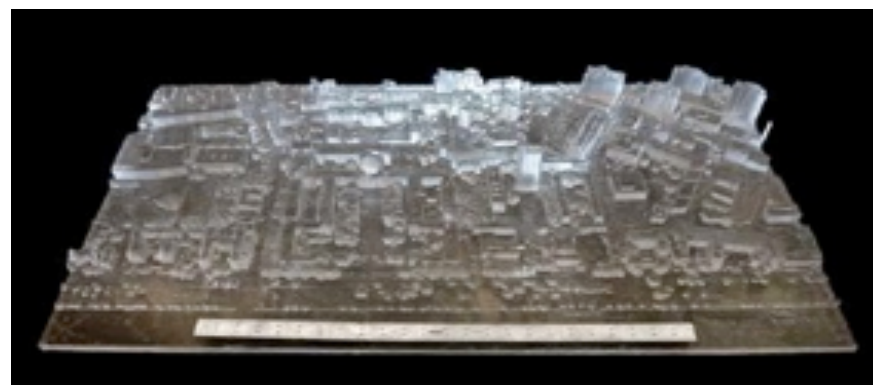


Data Extraction, MIT



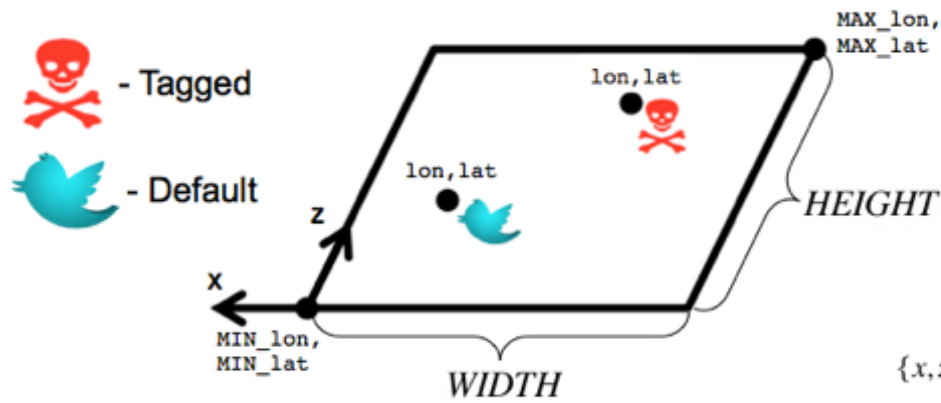
LADAR

- 1m resolution height map
- 1.0km x 0.56km region of Cambridge
- STL file





Game Configuration

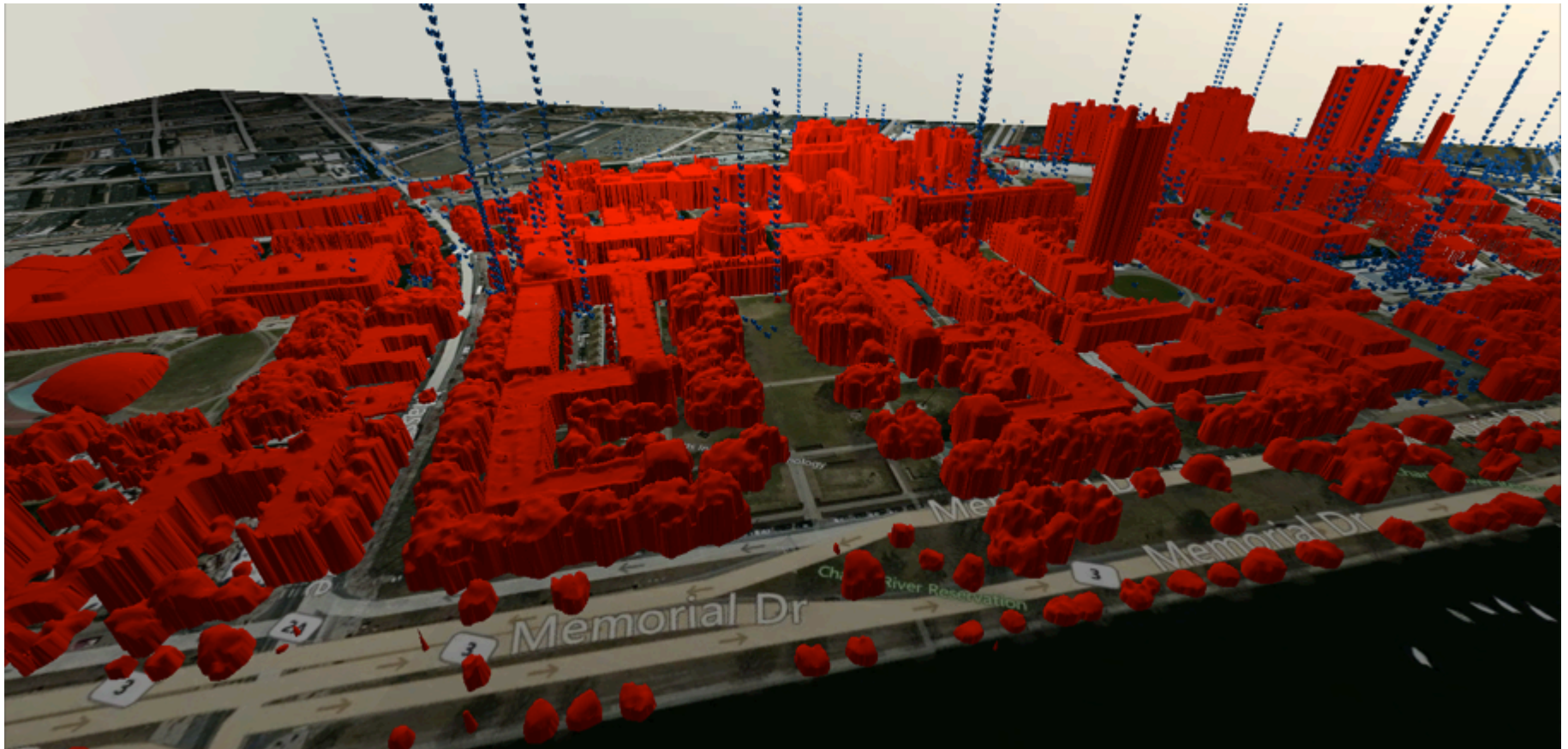


$$\{x, z\} = \frac{MAX_{\{lon, lat\}} - \{lon, lat\}}{MAX_{\{lon, lat\}} - MIN_{\{lon, lat\}}} \times \{WIDTH, HEIGHT\}$$



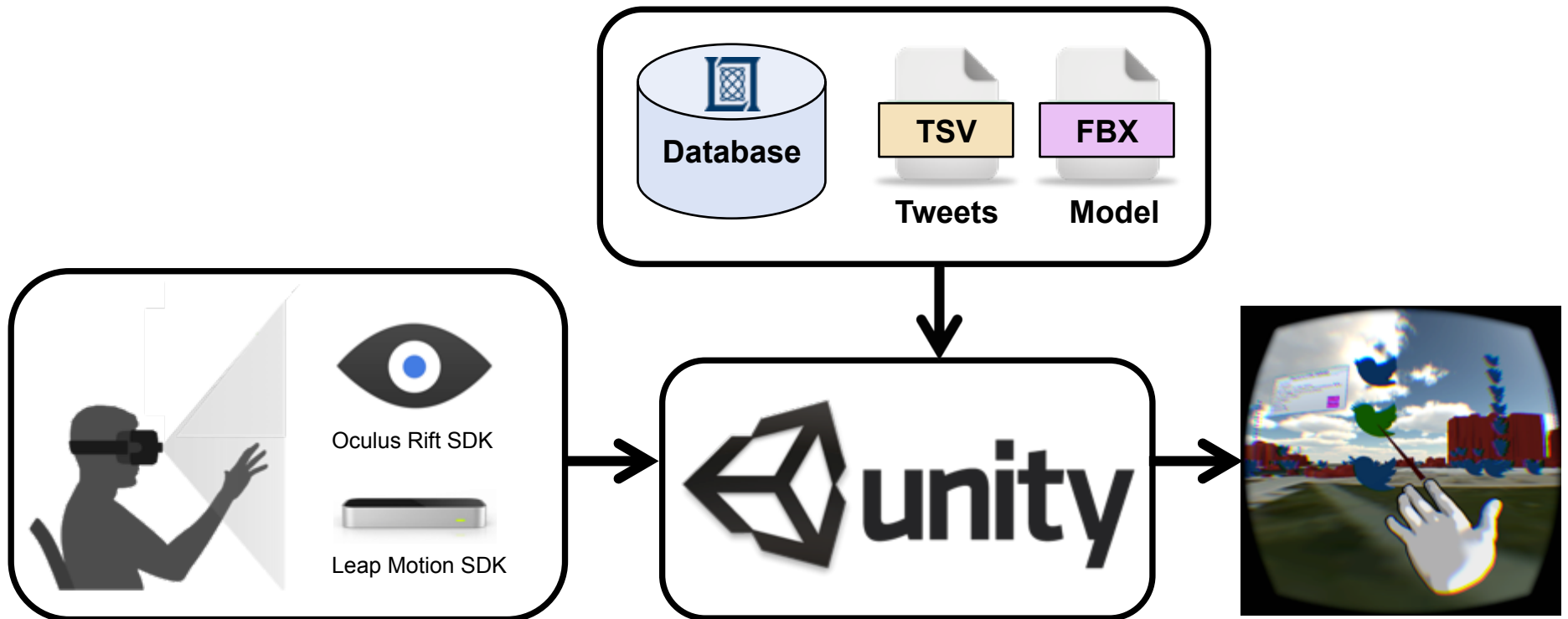
Game Configuration

- 3D Rendition of MIT with ~6000 tweets (Oct. 2013 – Feb. 2014)





Utilized Technologies



“3D Input Meets 3D Output” – Why choose Unity3D?

- Game Engine
- Physics Engine
- Extensive Integration
- Flexibility

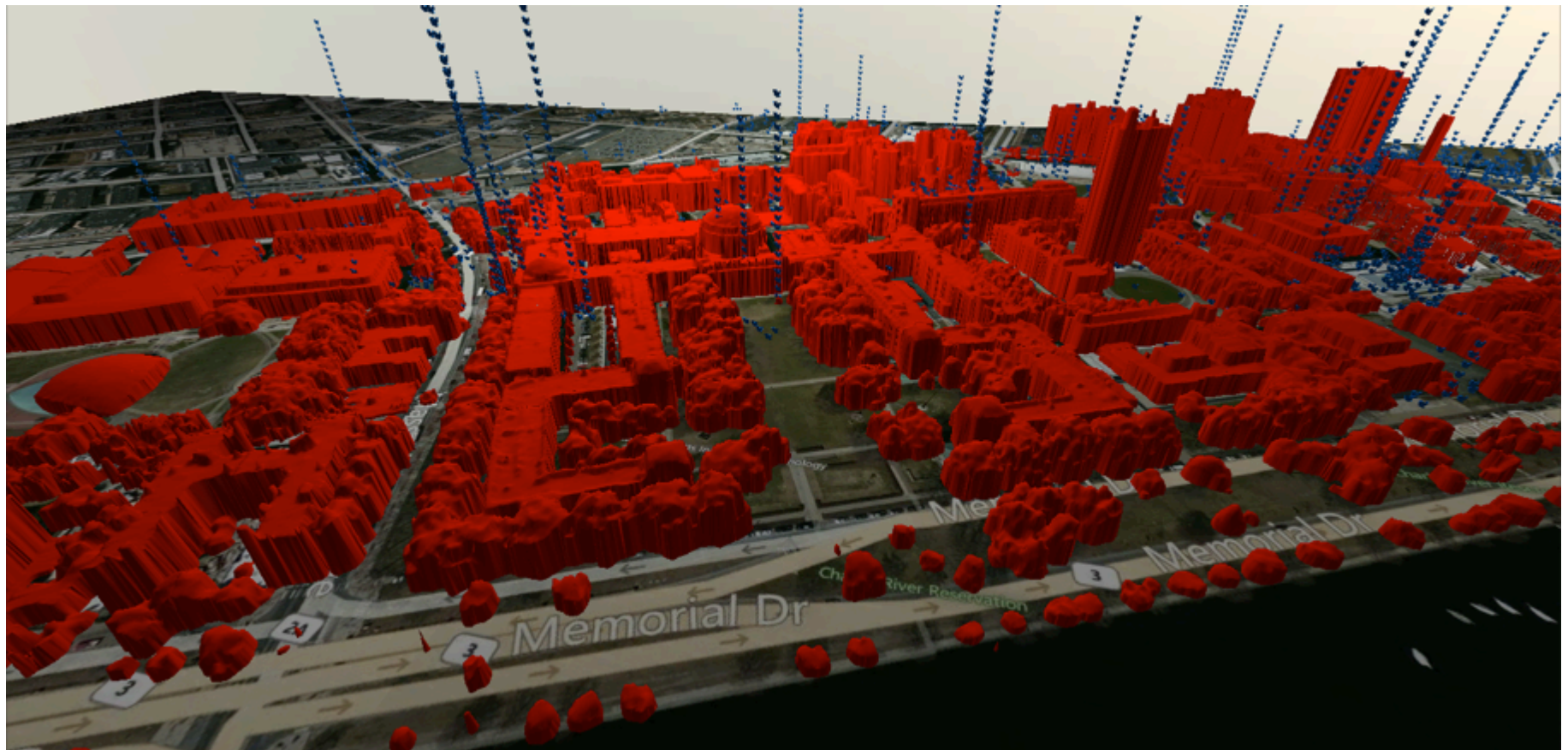


Outline

- Introduction
 - Big Data
 - Visualization
 - Virtual Reality
- Approach
 - Data Extraction
 - Game Configuration
 - Utilized Technologies
- ➔ • **Results**
 - **Virtual Environment**
 - **Analytical Tasks**
 - **Challenges**
- Summary, Future Work and Next Steps



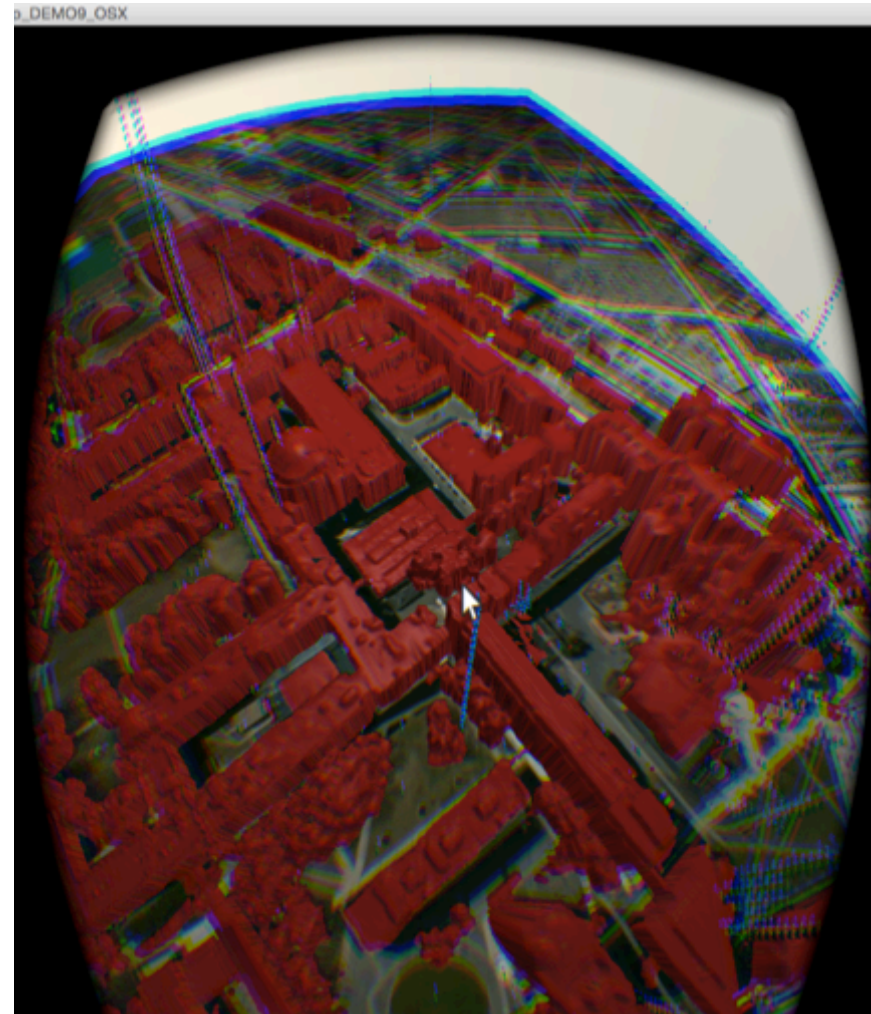
Virtual Environment





Analytical Tasks

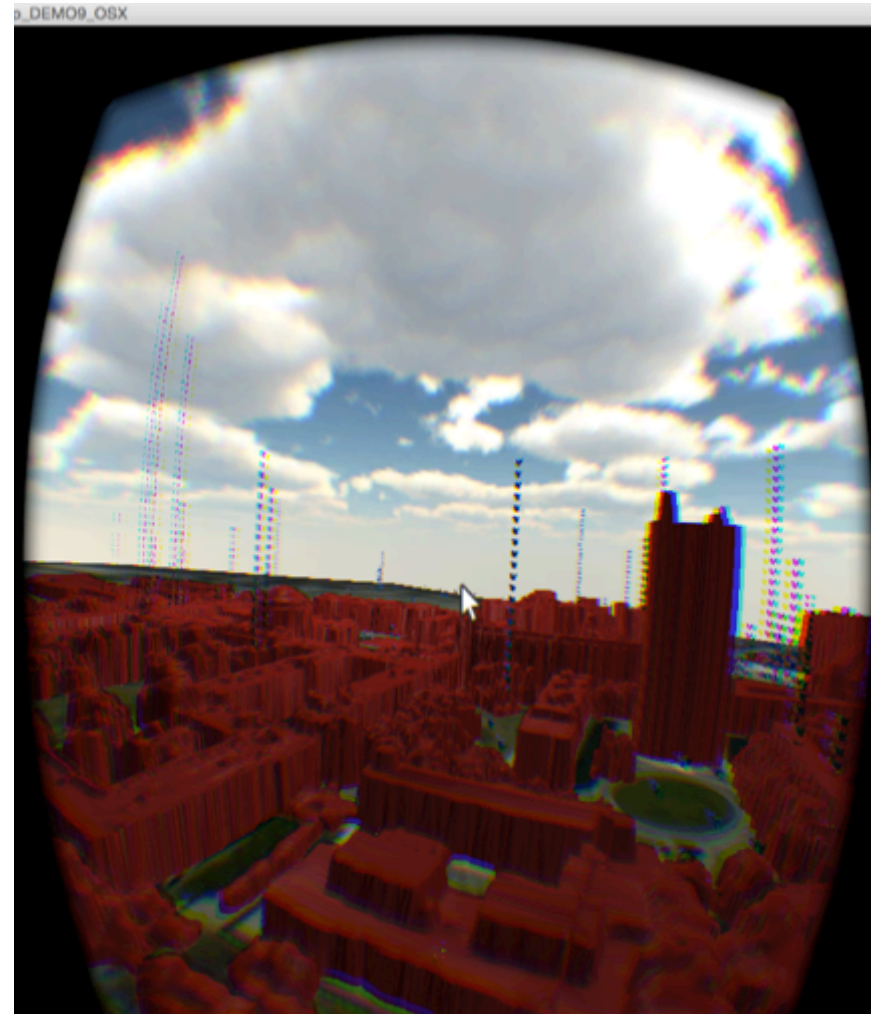
- ➔ • **Navigation/Exploration**
- Cluster Recognition
- Filtering
- Identification
- Selection
- Querying
- Relationships
- Tracking





Analytical Tasks

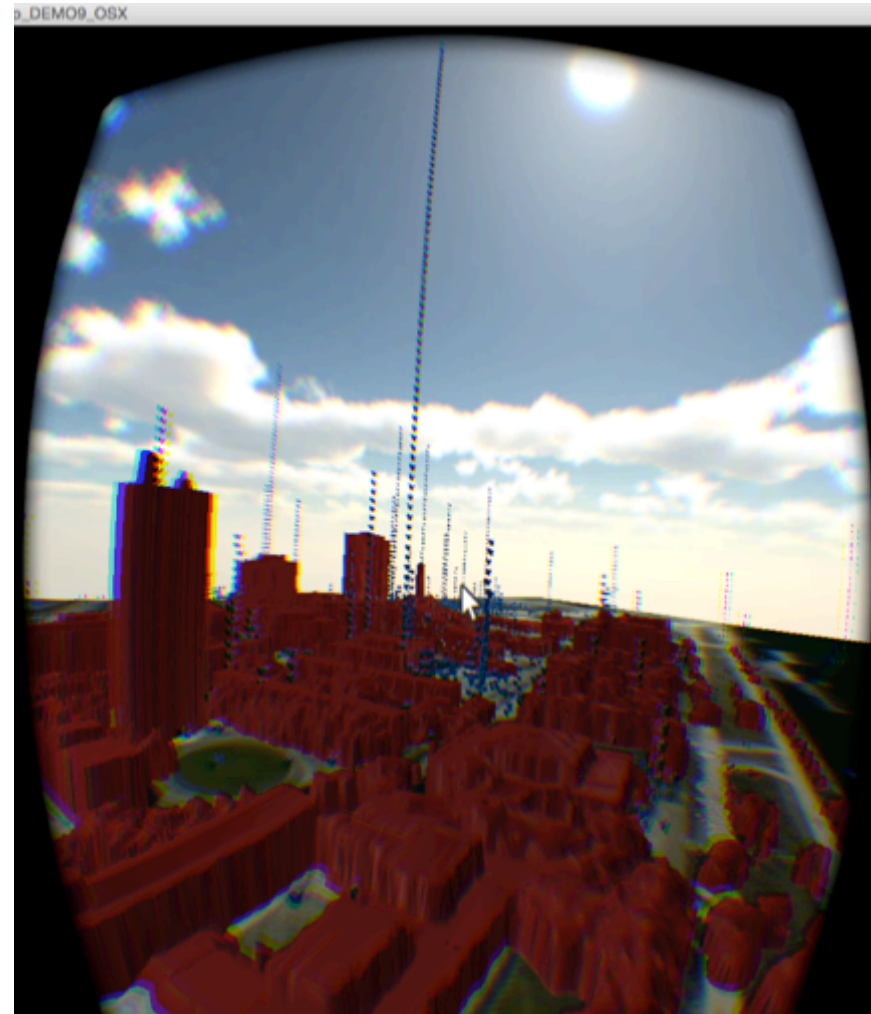
- ➔ • **Navigation/Exploration**
- Cluster Recognition
- Filtering
- Identification
- Selection
- Querying
- Relationships
- Tracking





Analytical Tasks

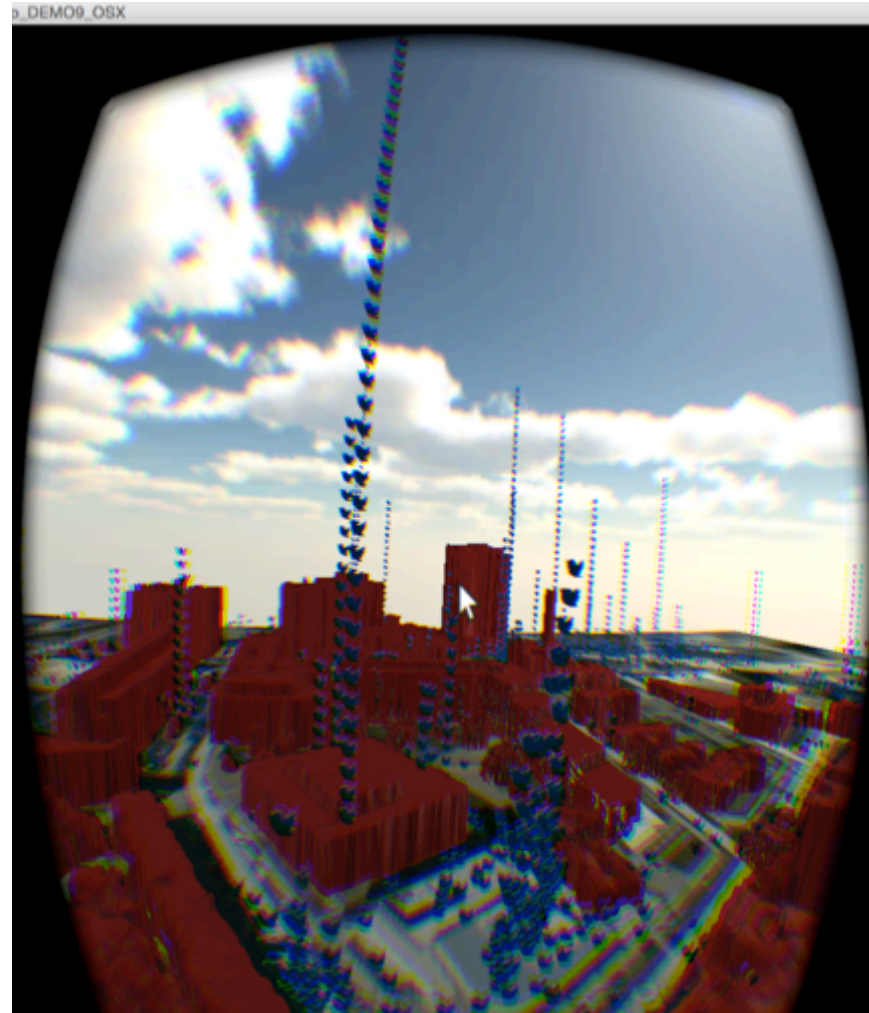
- ➔ • **Navigation/Exploration**
- Cluster Recognition
- Filtering
- Identification
- Selection
- Querying
- Relationships
- Tracking





Analytical Tasks

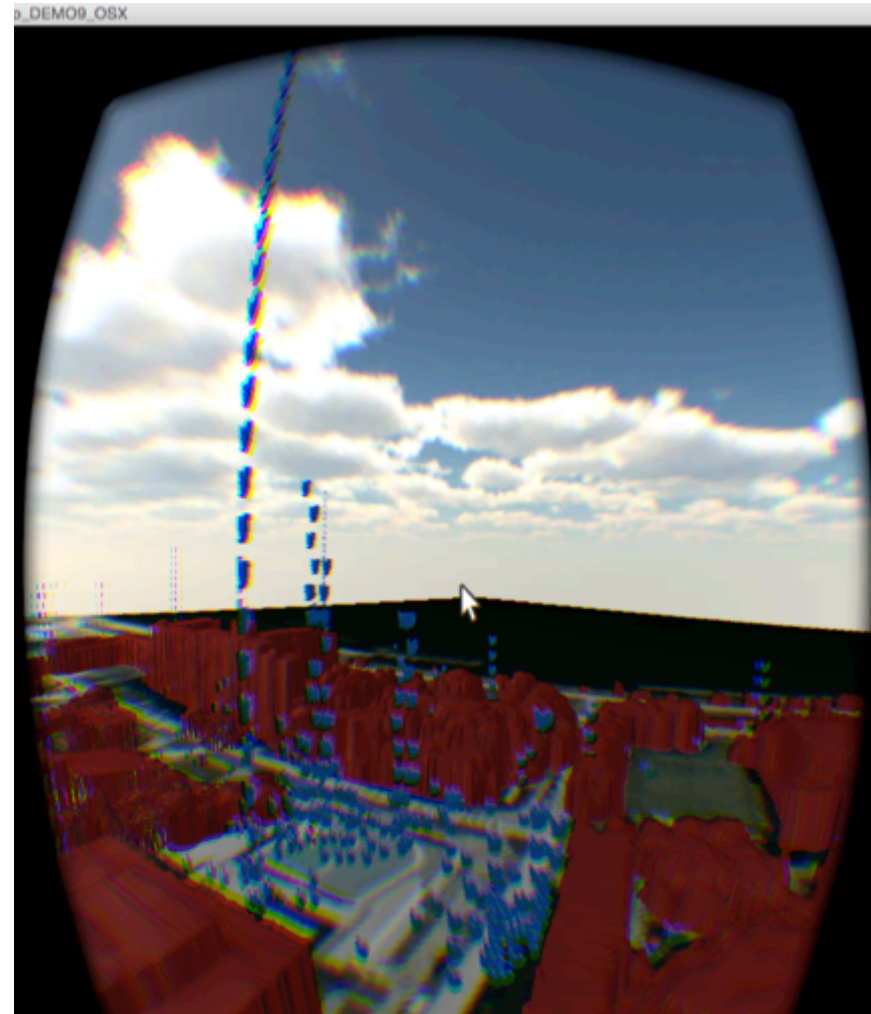
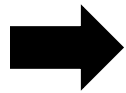
- Navigation/Exploration
- **Cluster Recognition**
- Filtering
- Identification
- Selection
- Querying
- Relationships
- Tracking





Analytical Tasks

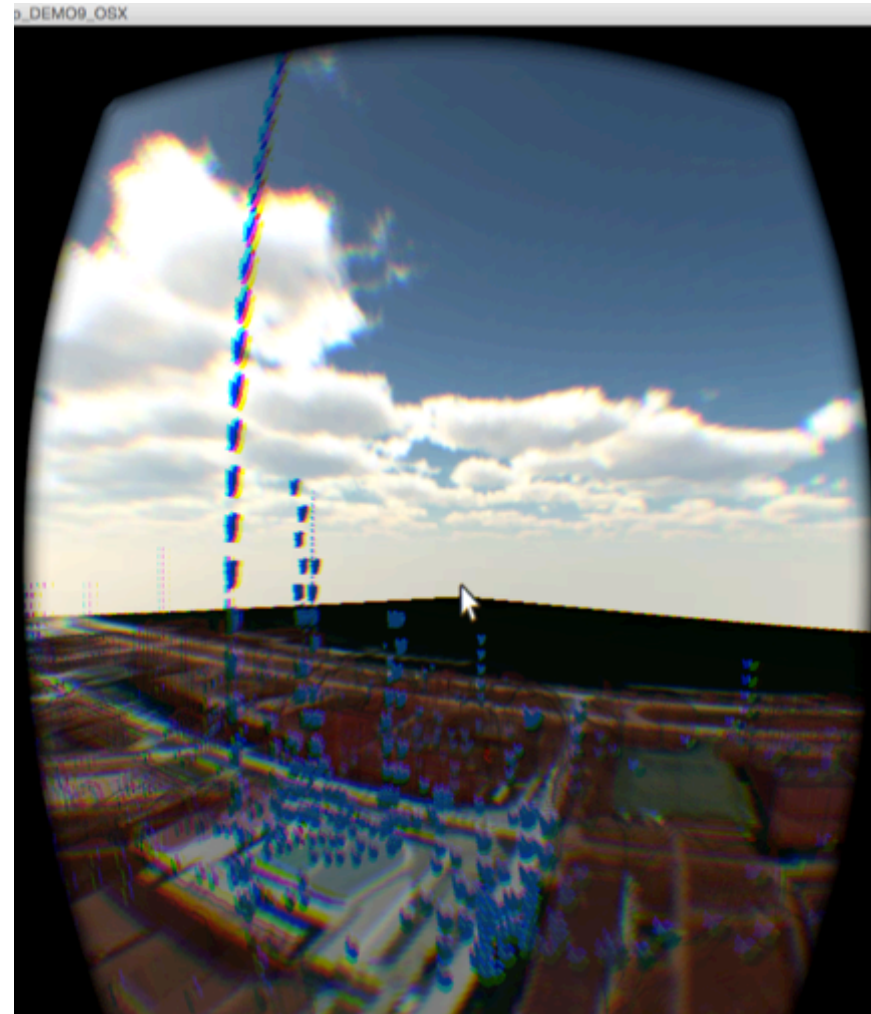
- Navigation/Exploration
- **Cluster Recognition**
- Filtering
- Identification
- Selection
- Querying
- Relationships
- Tracking





Analytical Tasks

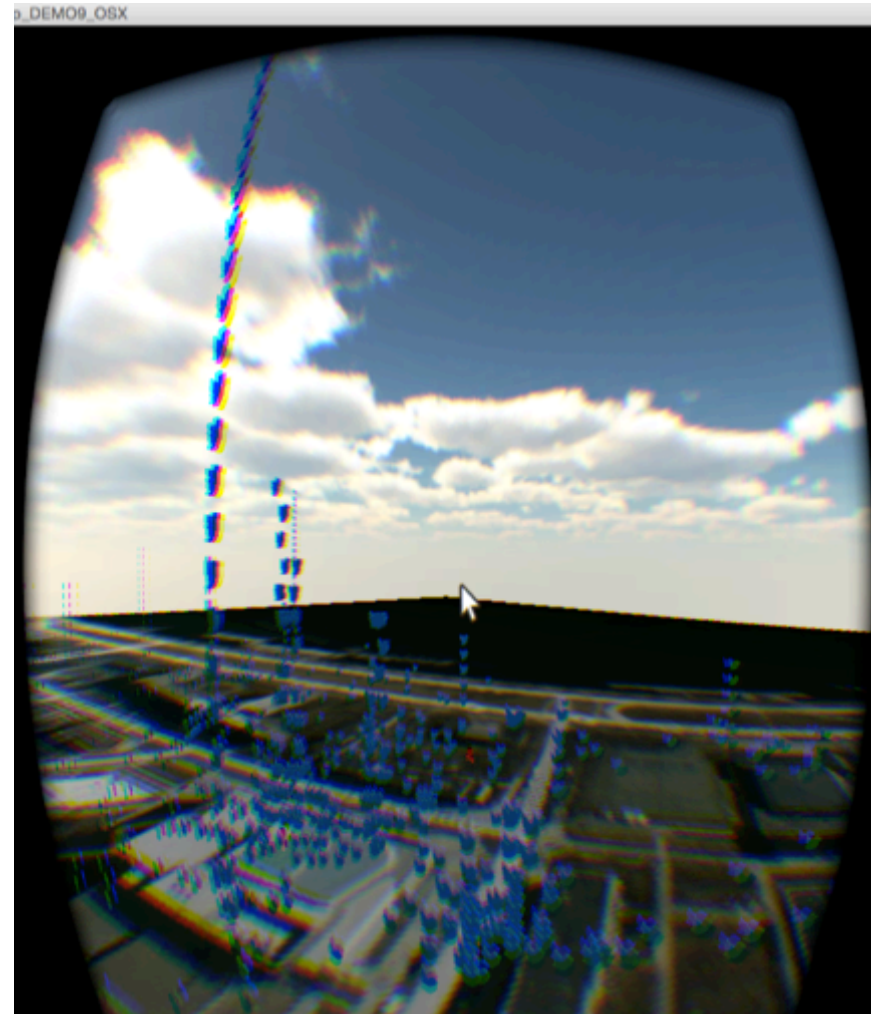
- Navigation/Exploration
- Cluster Recognition
- ➔ • **Filtering**
- Identification
- Selection
- Querying
- Relationships
- Tracking





Analytical Tasks

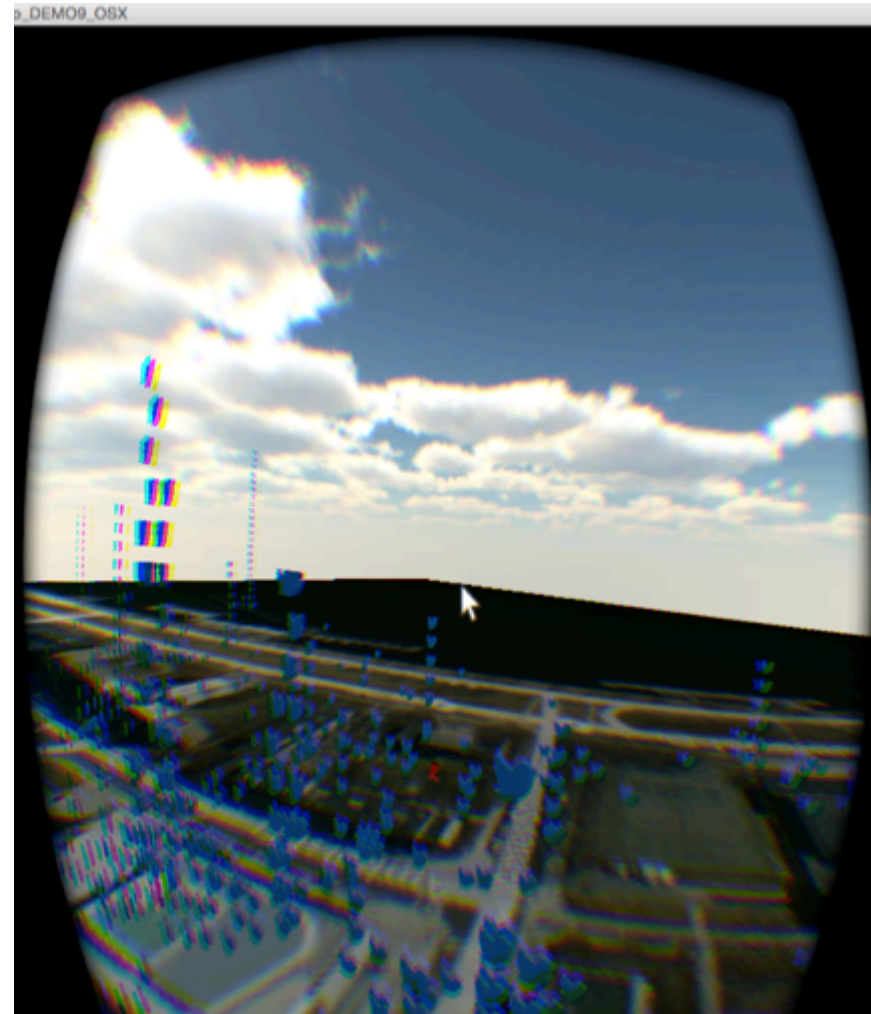
- Navigation/Exploration
- Cluster Recognition
- ➔ • **Filtering**
- Identification
- Selection
- Querying
- Relationships
- Tracking





Analytical Tasks

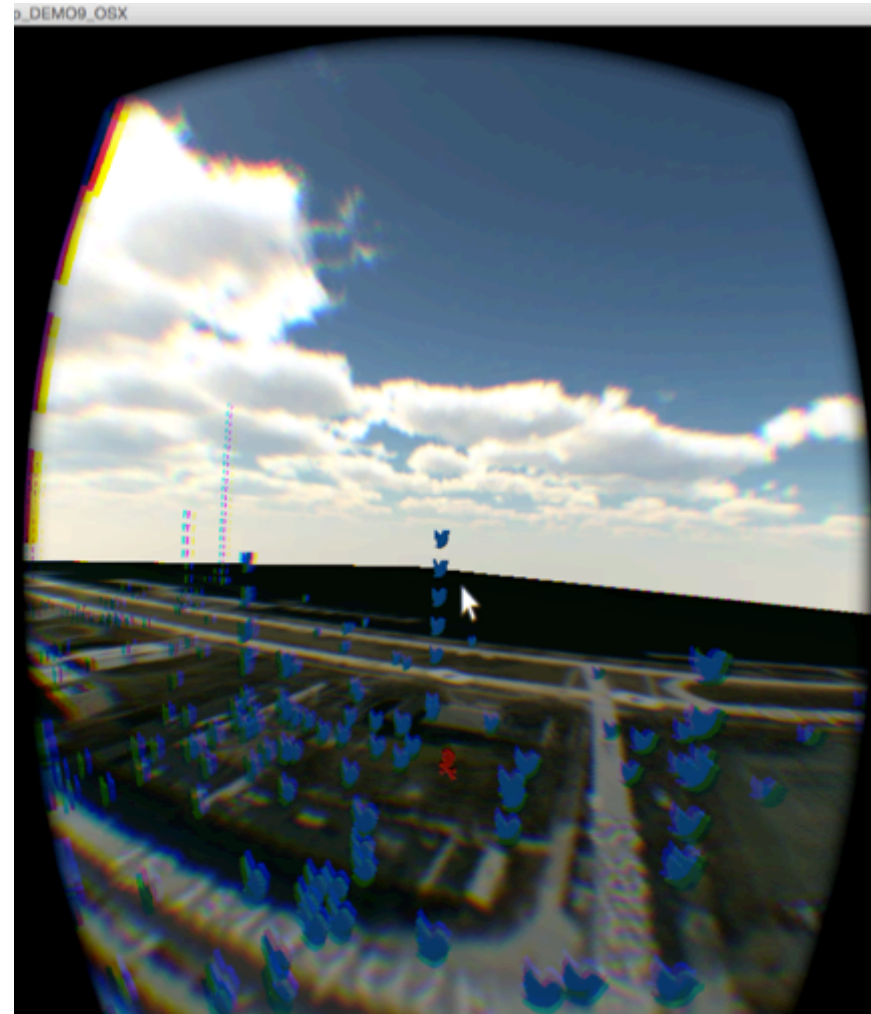
- Navigation/Exploration
- Cluster Recognition
- Filtering
- ➔ • **Identification**
- Selection
- Querying
- Relationships
- Tracking





Analytical Tasks

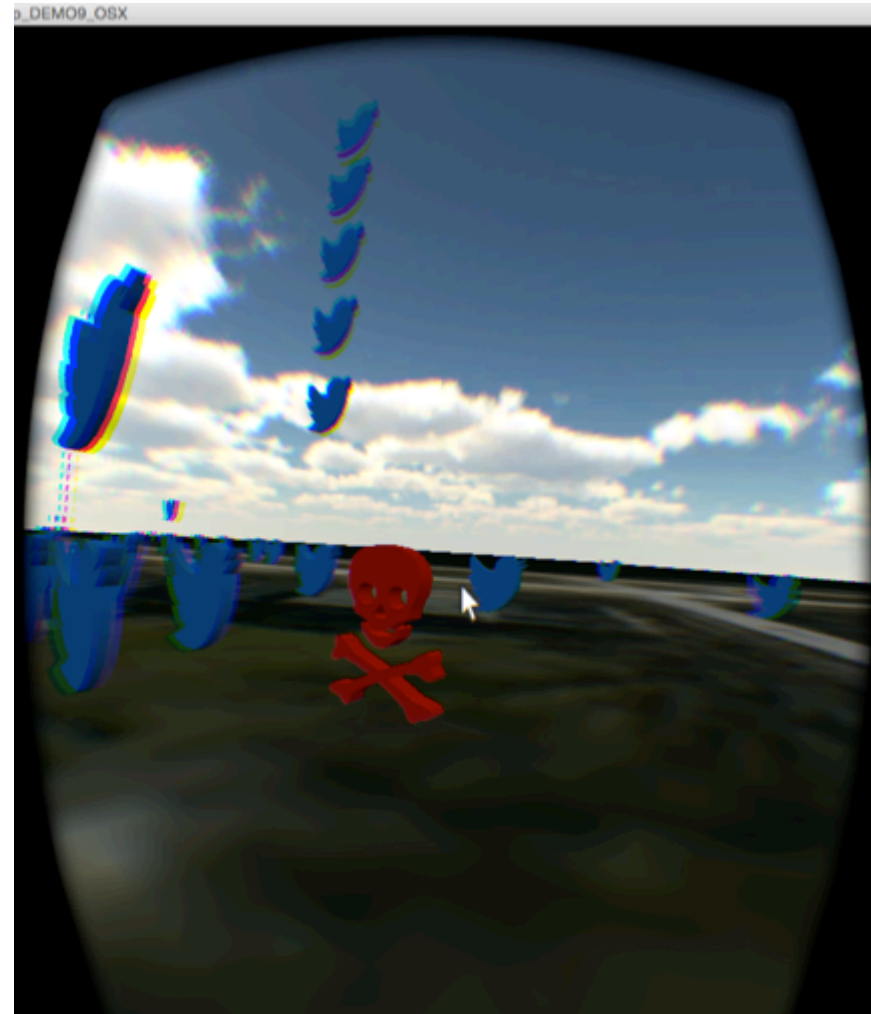
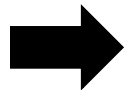
- Navigation/Exploration
- Cluster Recognition
- Filtering
- ➔ • **Identification**
- Selection
- Querying
- Relationships
- Tracking





Analytical Tasks

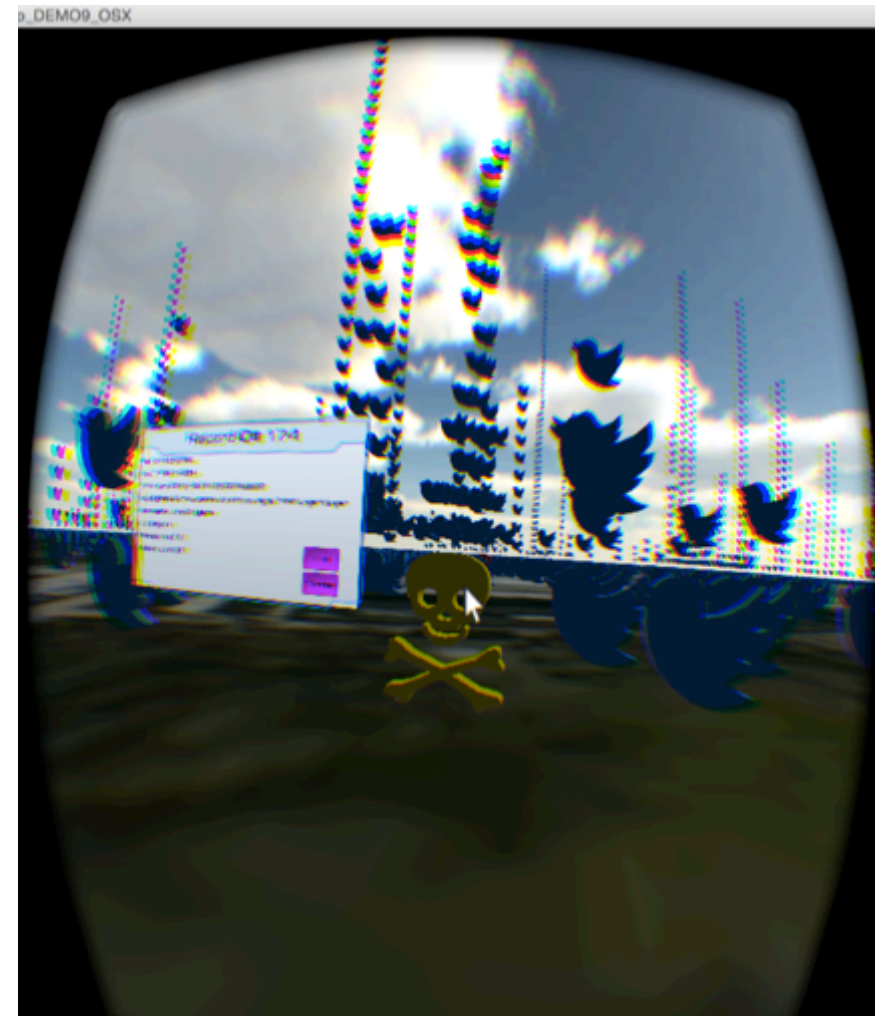
- Navigation/Exploration
- Cluster Recognition
- Filtering
- **Identification**
- Selection
- Querying
- Relationships
- Tracking





Analytical Tasks

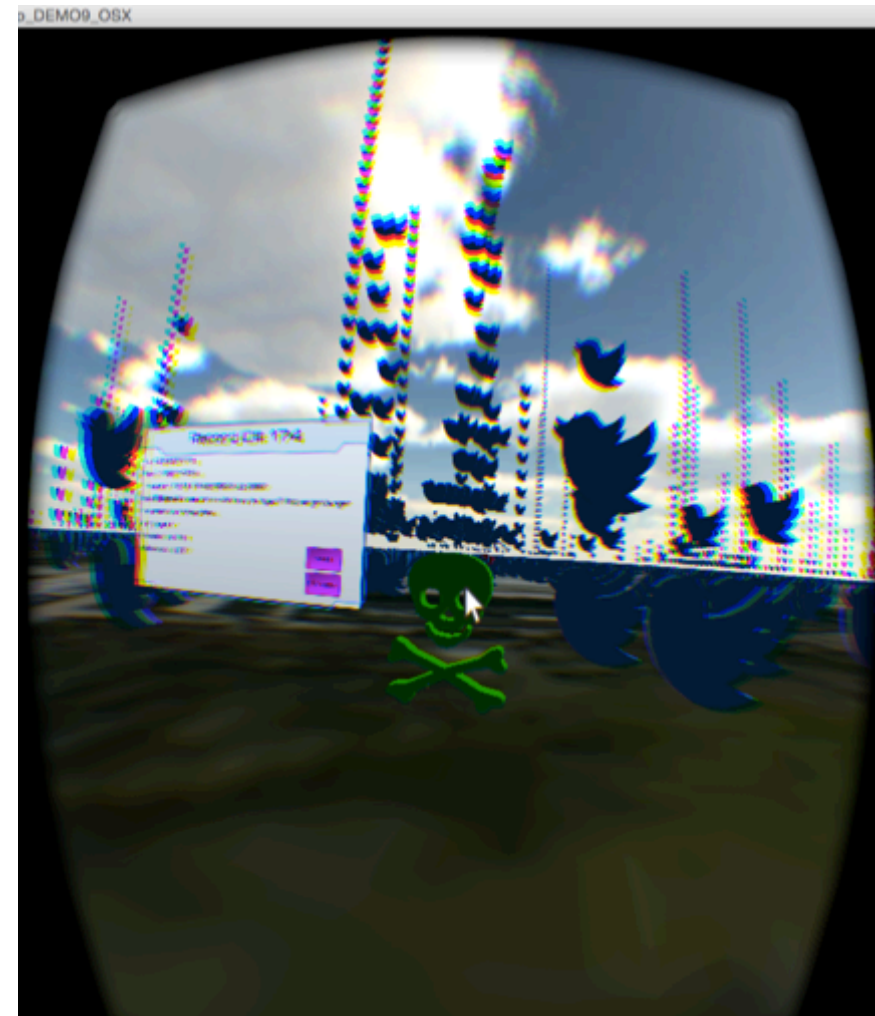
- Navigation/Exploration
- Cluster Recognition
- Filtering
- Identification
- ➔ • **Selection**
- Querying
- Relationships
- Tracking





Analytical Tasks

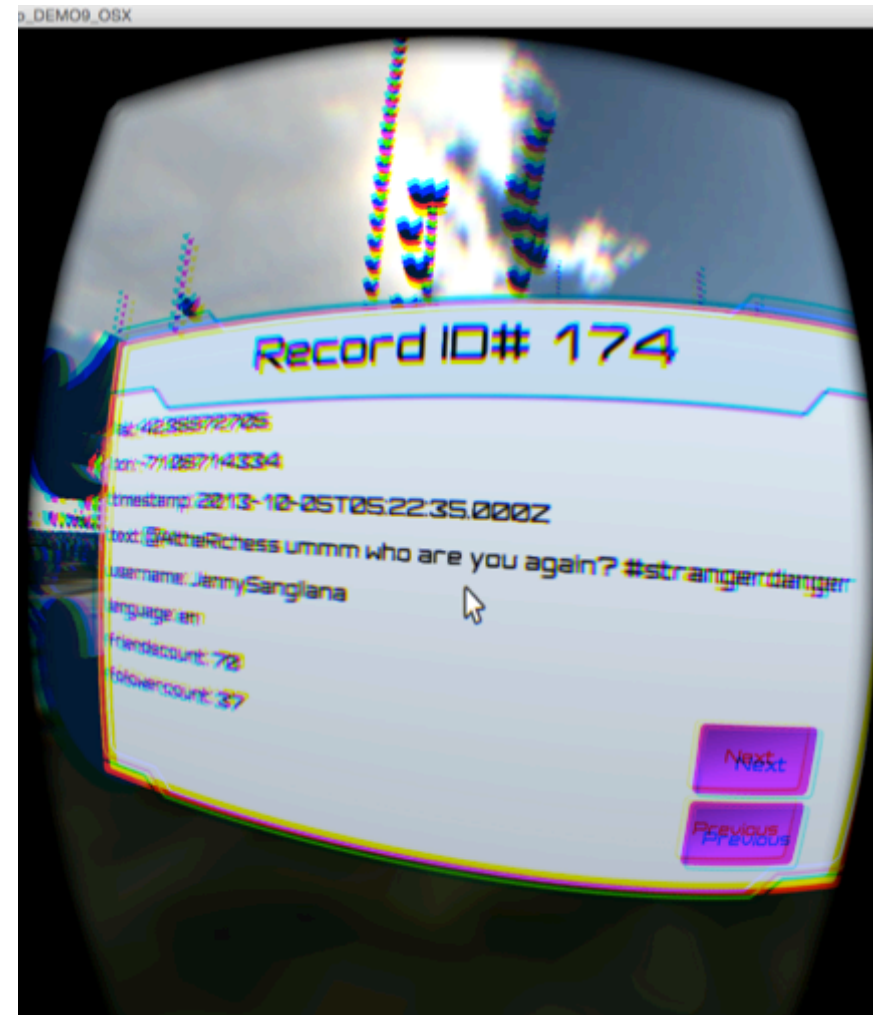
- Navigation/Exploration
- Cluster Recognition
- Filtering
- Identification
- ➔ • **Selection**
- Querying
- Relationships
- Tracking





Analytical Tasks

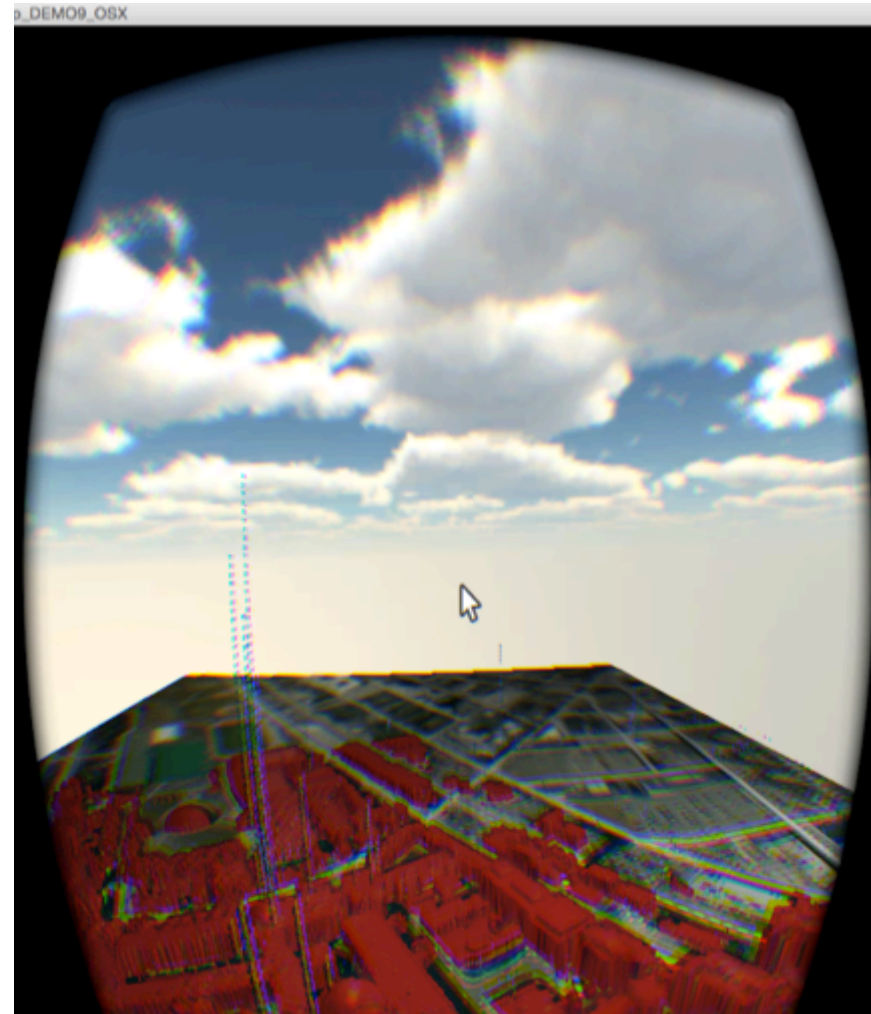
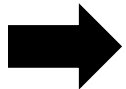
- Navigation/Exploration
- Cluster Recognition
- Filtering
- Identification
- ➔ • **Selection**
- Querying
- Relationships
- Tracking





Analytical Tasks

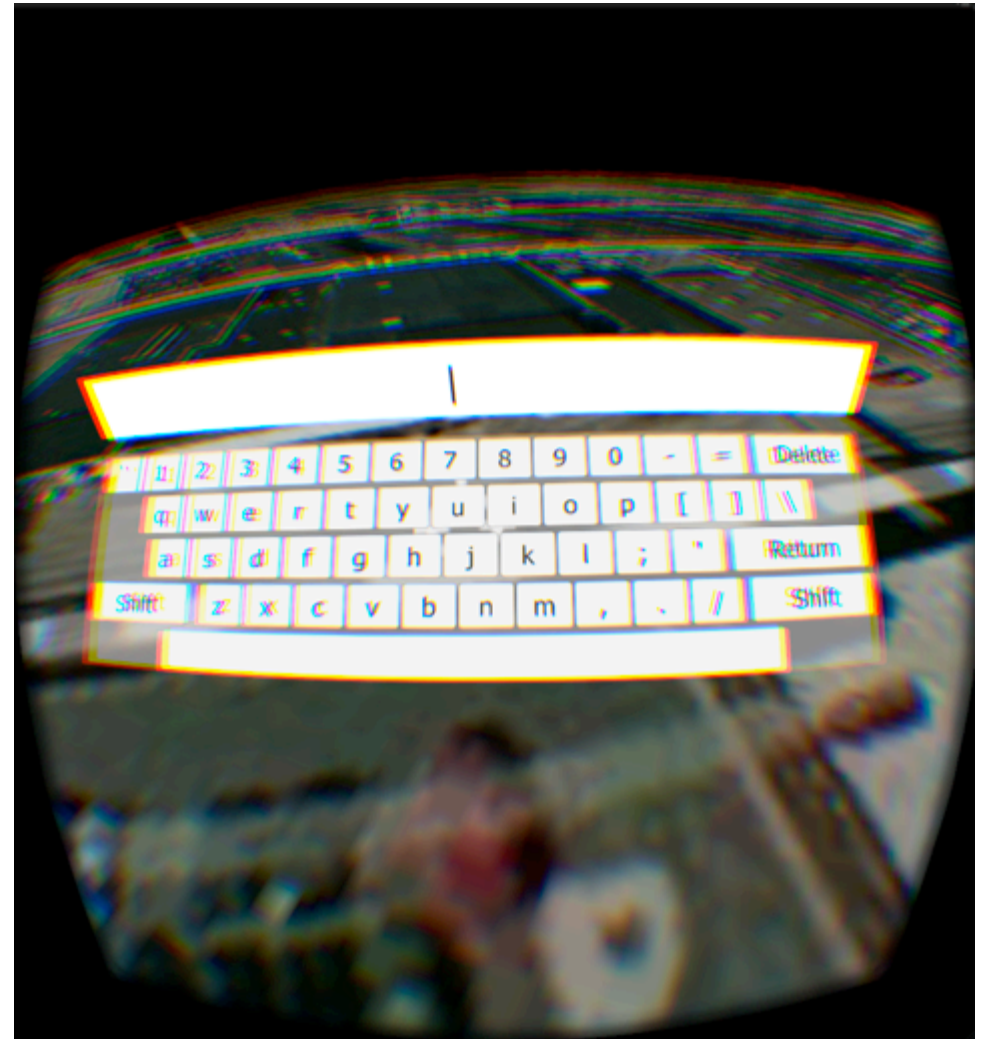
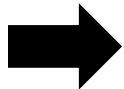
- Navigation/Exploration
- Cluster Recognition
- Filtering
- Identification
- Selection
- **Querying**
- Relationships
- Tracking





Analytical Tasks

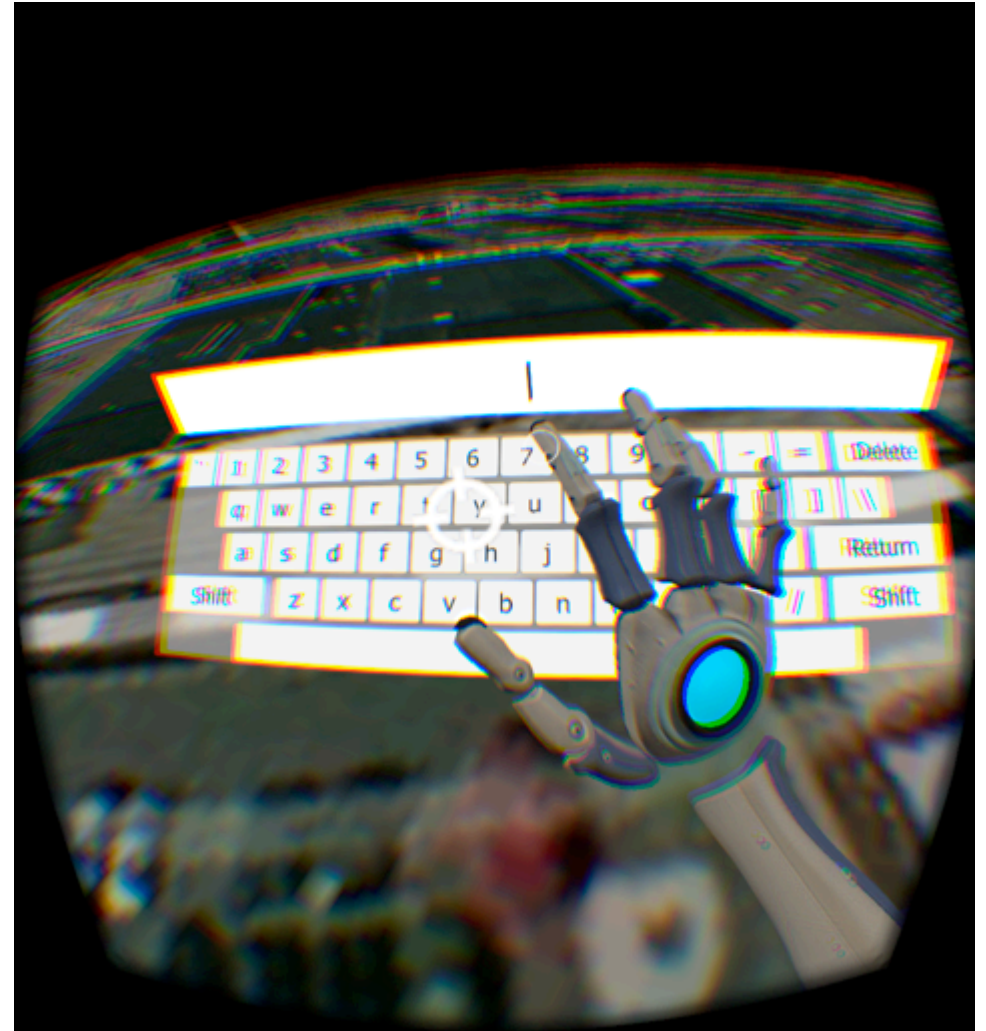
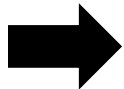
- Navigation/Exploration
- Cluster Recognition
- Filtering
- Identification
- Selection
- **Querying**
- Relationships
- Tracking





Analytical Tasks

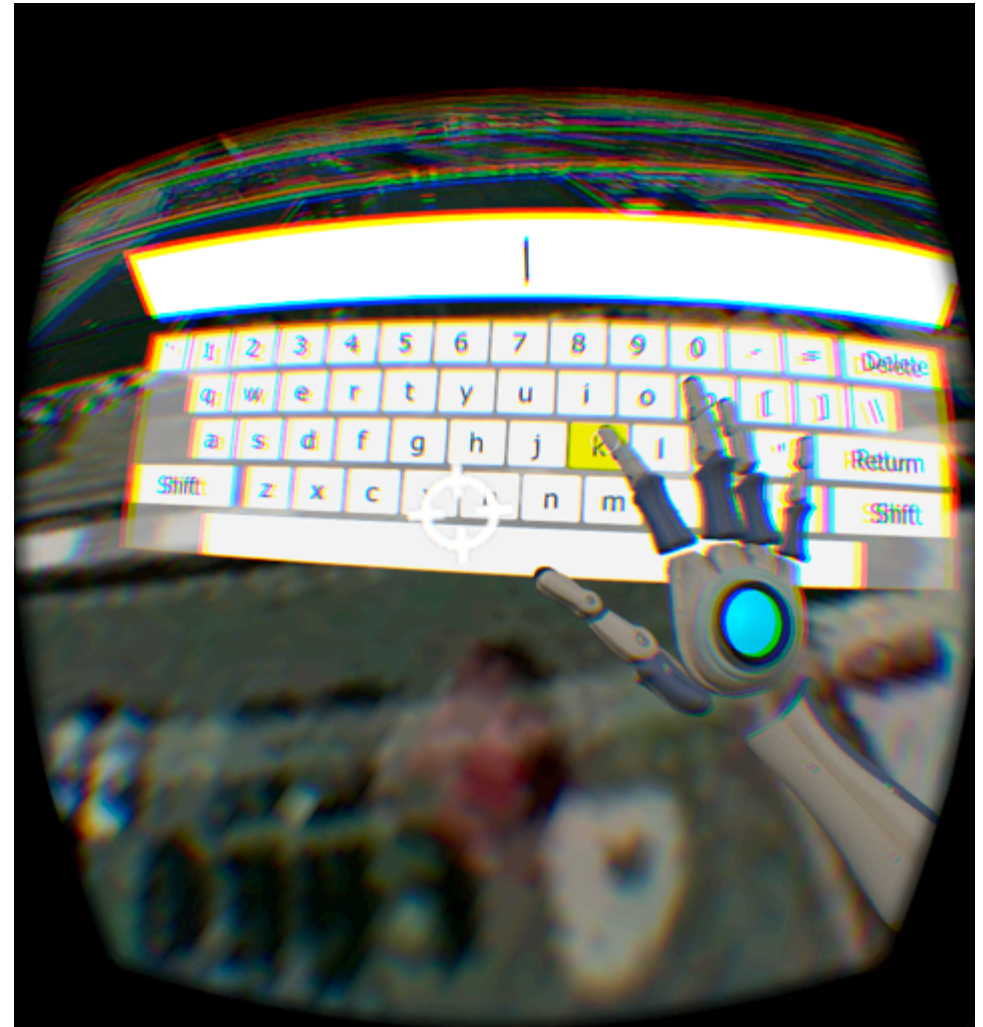
- Navigation/Exploration
- Cluster Recognition
- Filtering
- Identification
- Selection
- **Querying**
- Relationships
- Tracking





Analytical Tasks

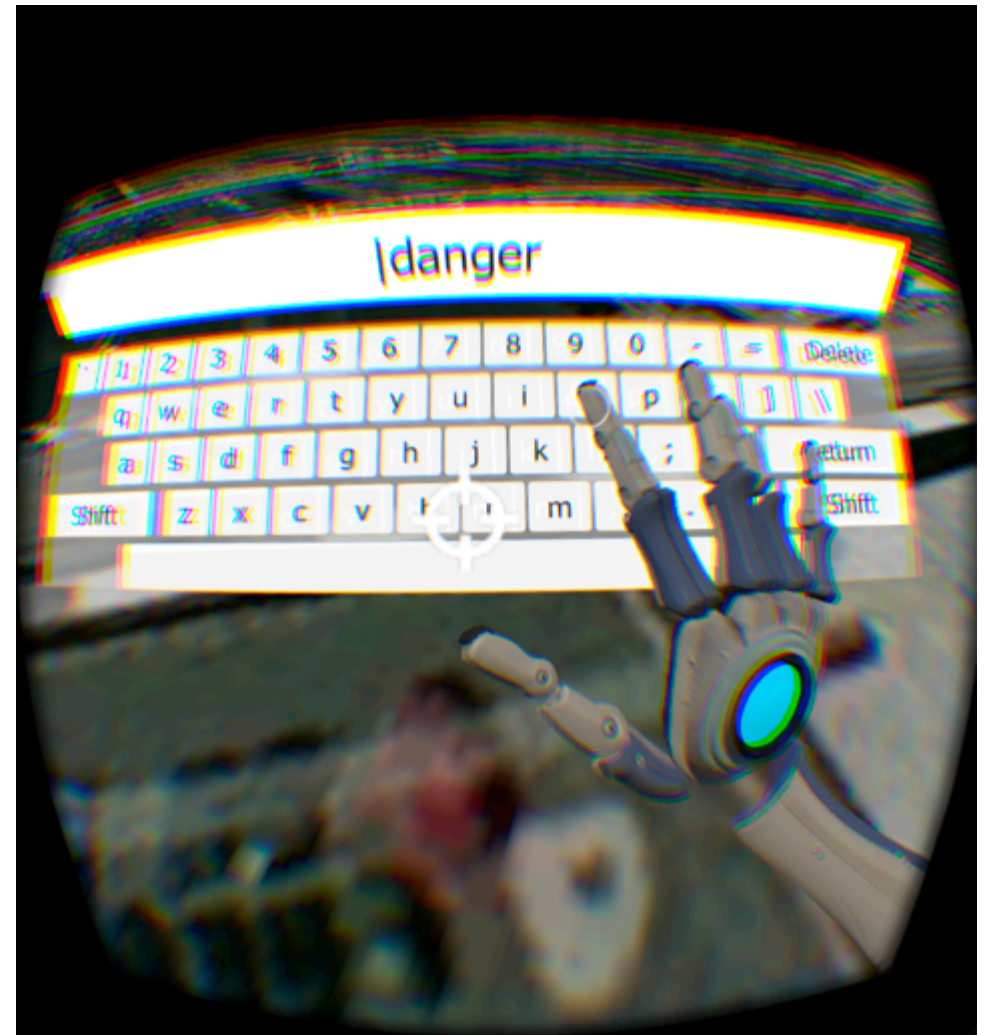
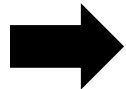
- Navigation/Exploration
- Cluster Recognition
- Filtering
- Identification
- Selection
- ➔ • **Querying**
- Relationships
- Tracking





Analytical Tasks

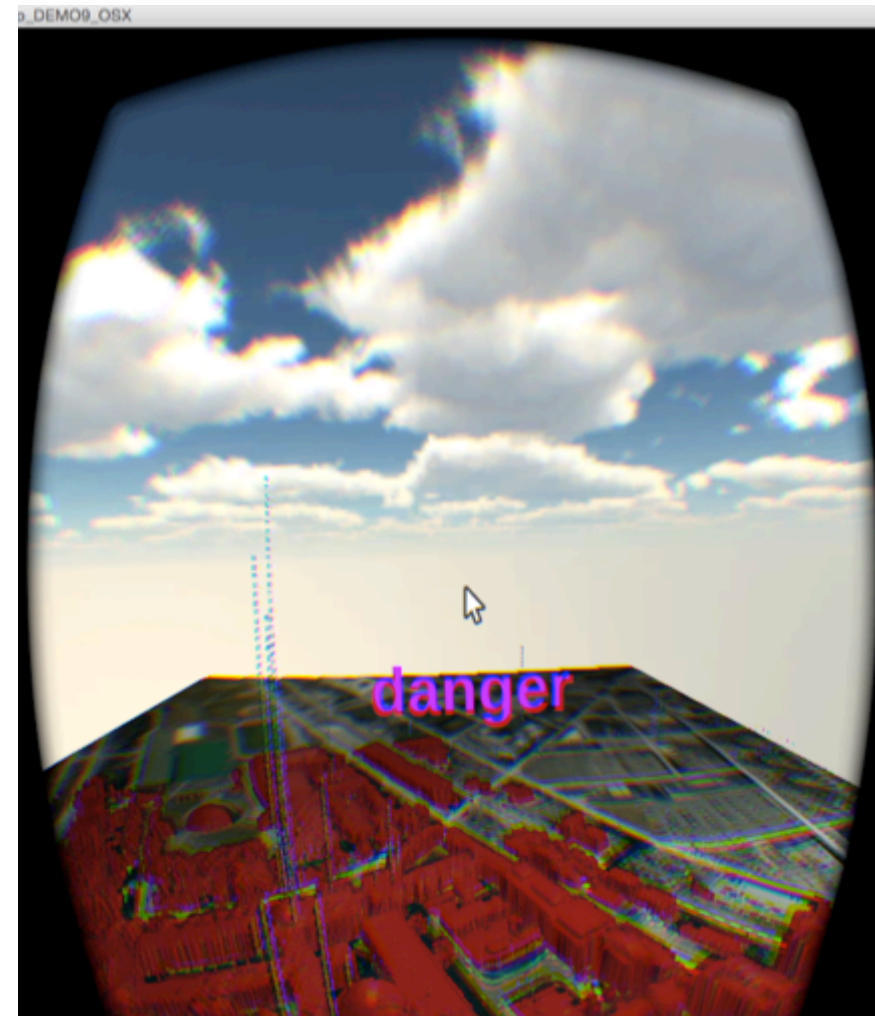
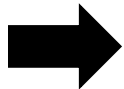
- Navigation/Exploration
- Cluster Recognition
- Filtering
- Identification
- Selection
- **Querying**
- Relationships
- Tracking





Analytical Tasks

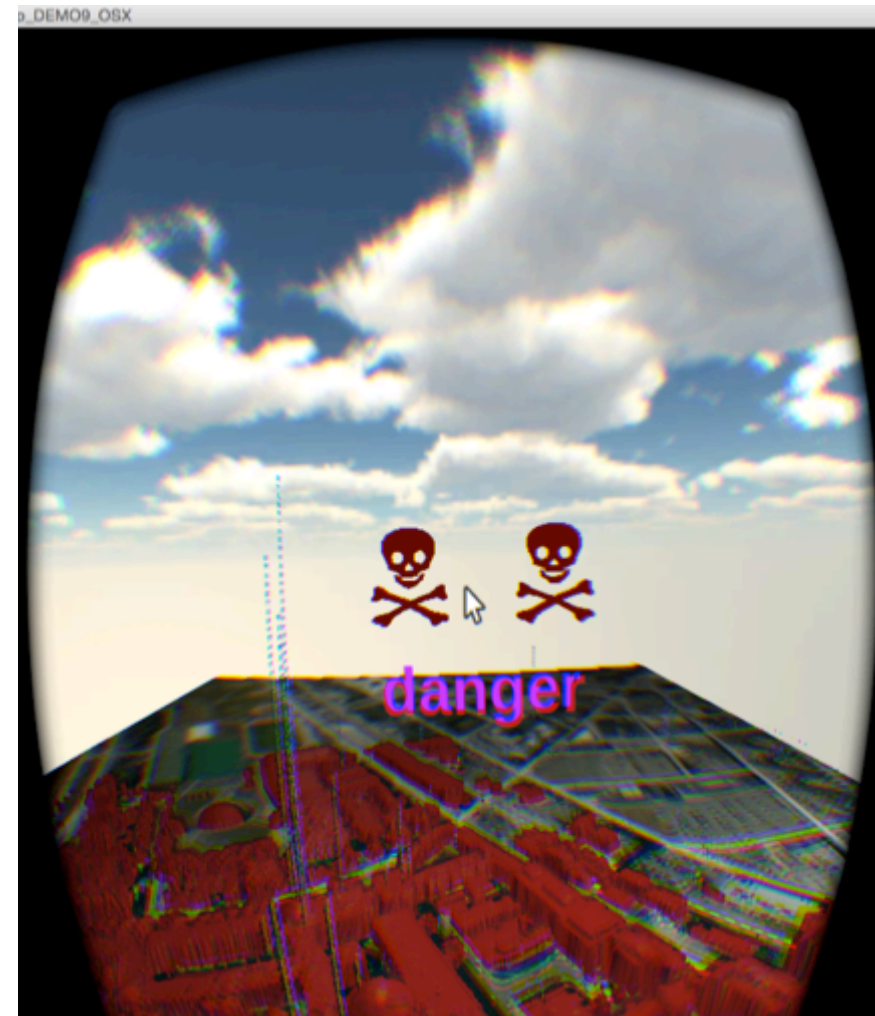
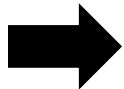
- Navigation/Exploration
- Cluster Recognition
- Filtering
- Identification
- Selection
- **Querying**
- Relationships
- Tracking





Analytical Tasks

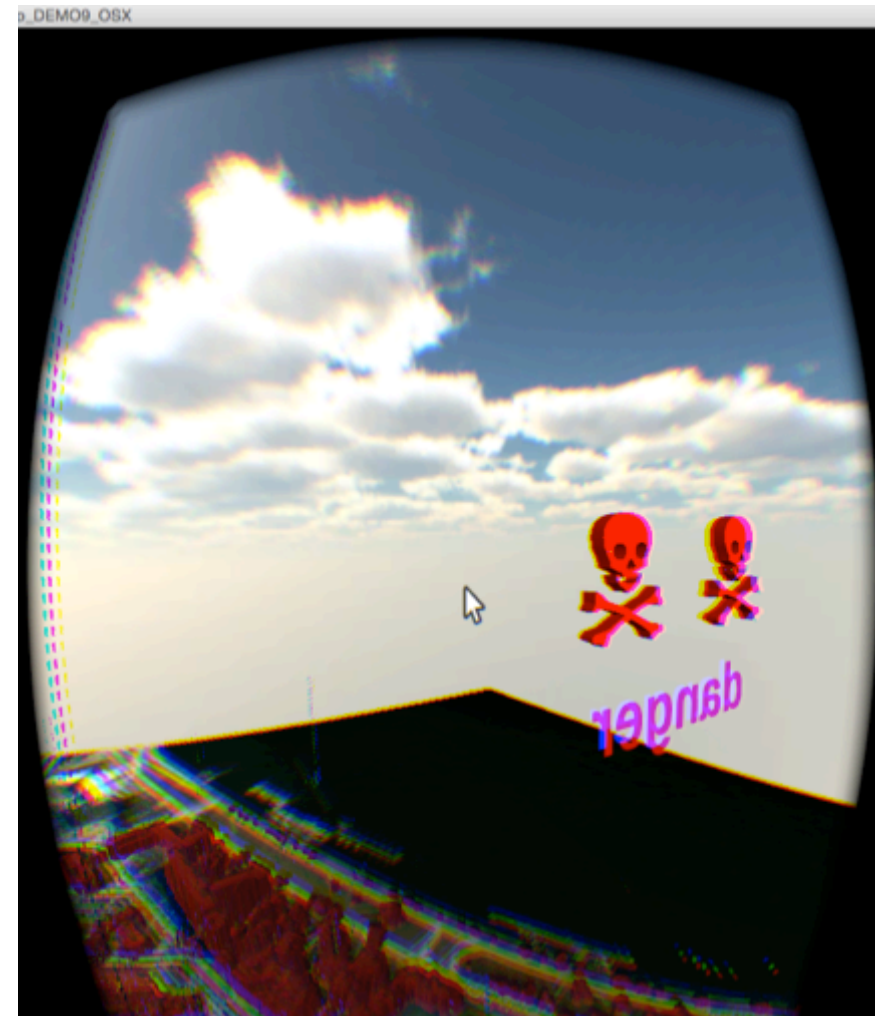
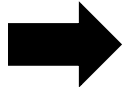
- Navigation/Exploration
- Cluster Recognition
- Filtering
- Identification
- Selection
- **Querying**
- Relationships
- Tracking





Analytical Tasks

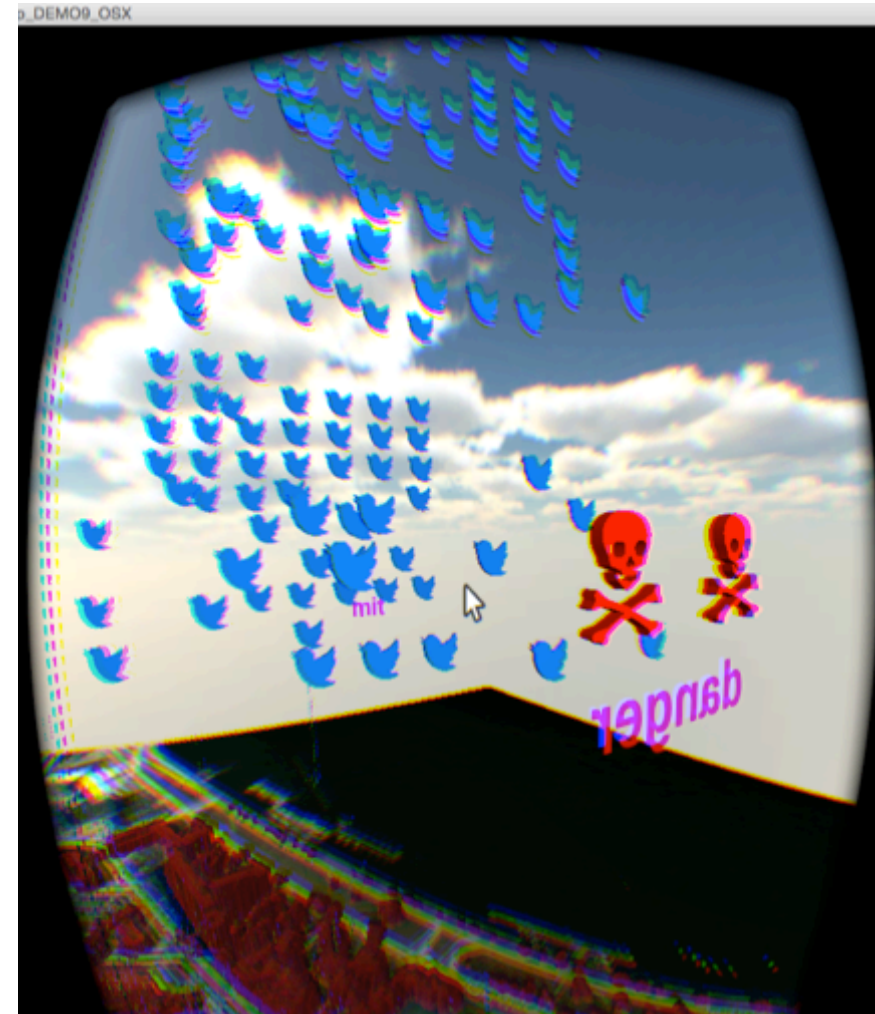
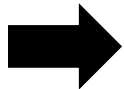
- Navigation/Exploration
- Cluster Recognition
- Filtering
- Identification
- Selection
- **Querying**
- Relationships
- Tracking





Analytical Tasks

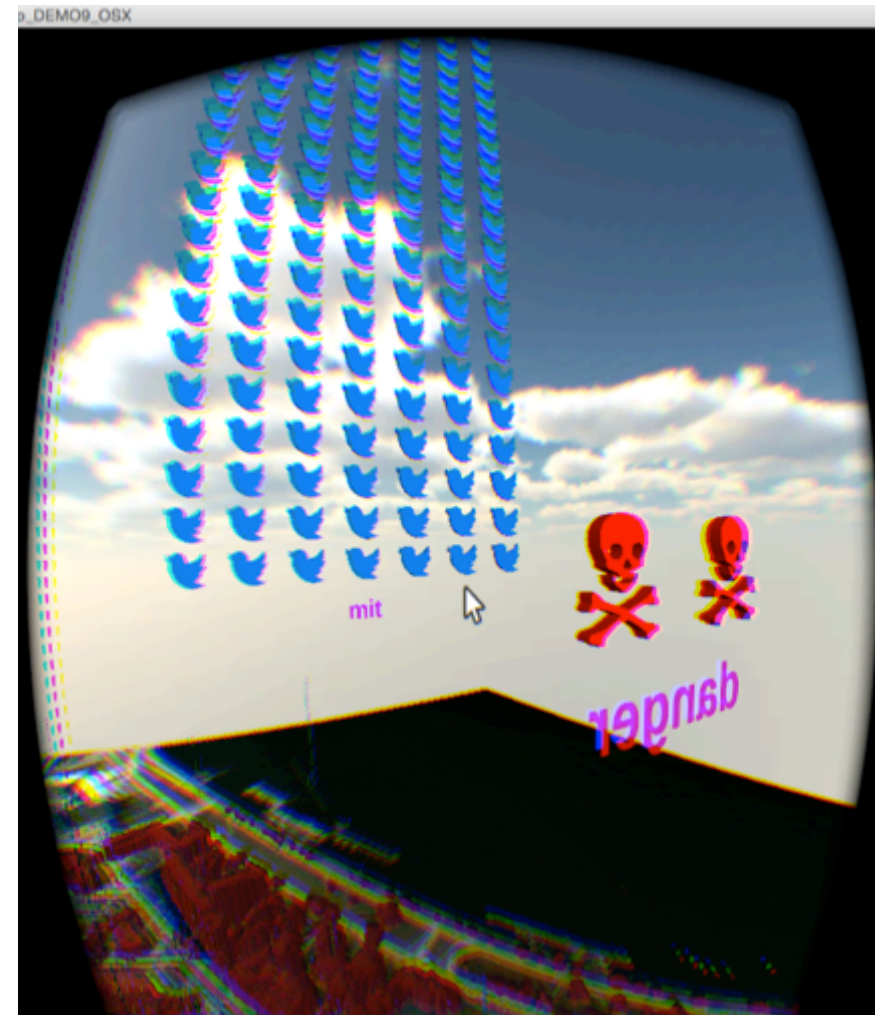
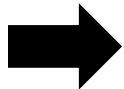
- Navigation/Exploration
- Cluster Recognition
- Filtering
- Identification
- Selection
- **Querying**
- Relationships
- Tracking





Analytical Tasks

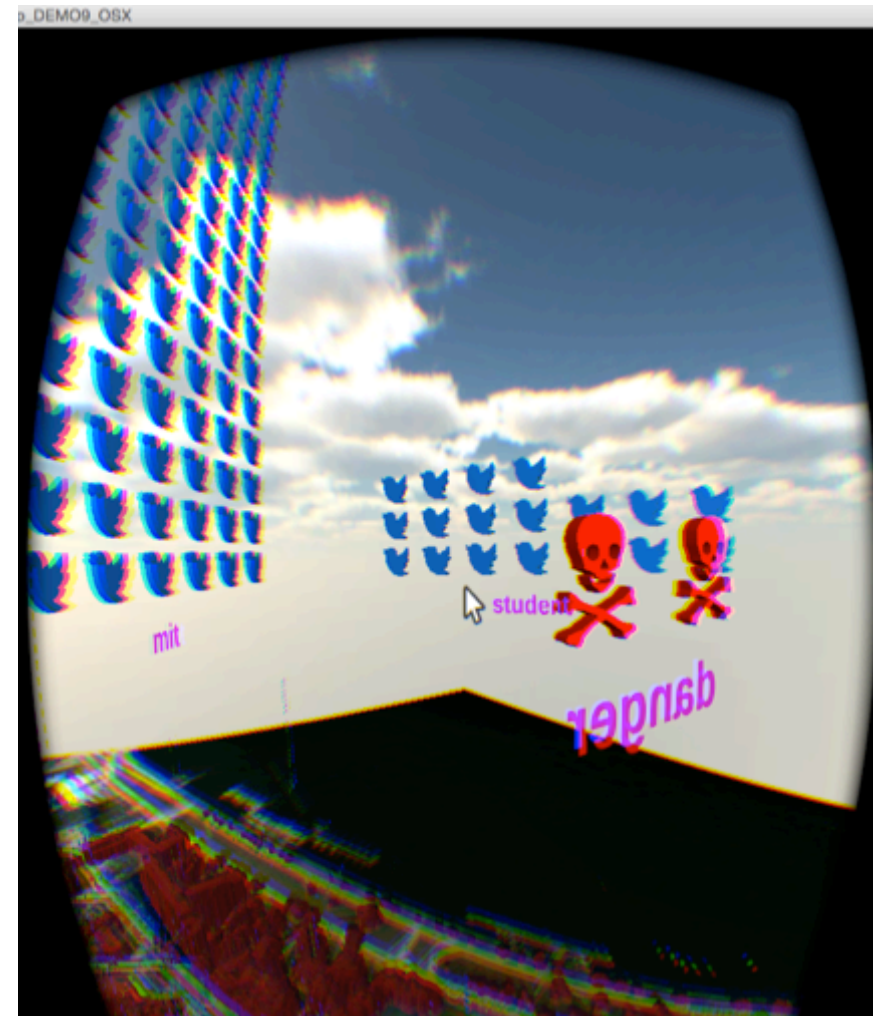
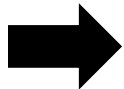
- Navigation/Exploration
- Cluster Recognition
- Filtering
- Identification
- Selection
- **Querying**
- Relationships
- Tracking





Analytical Tasks

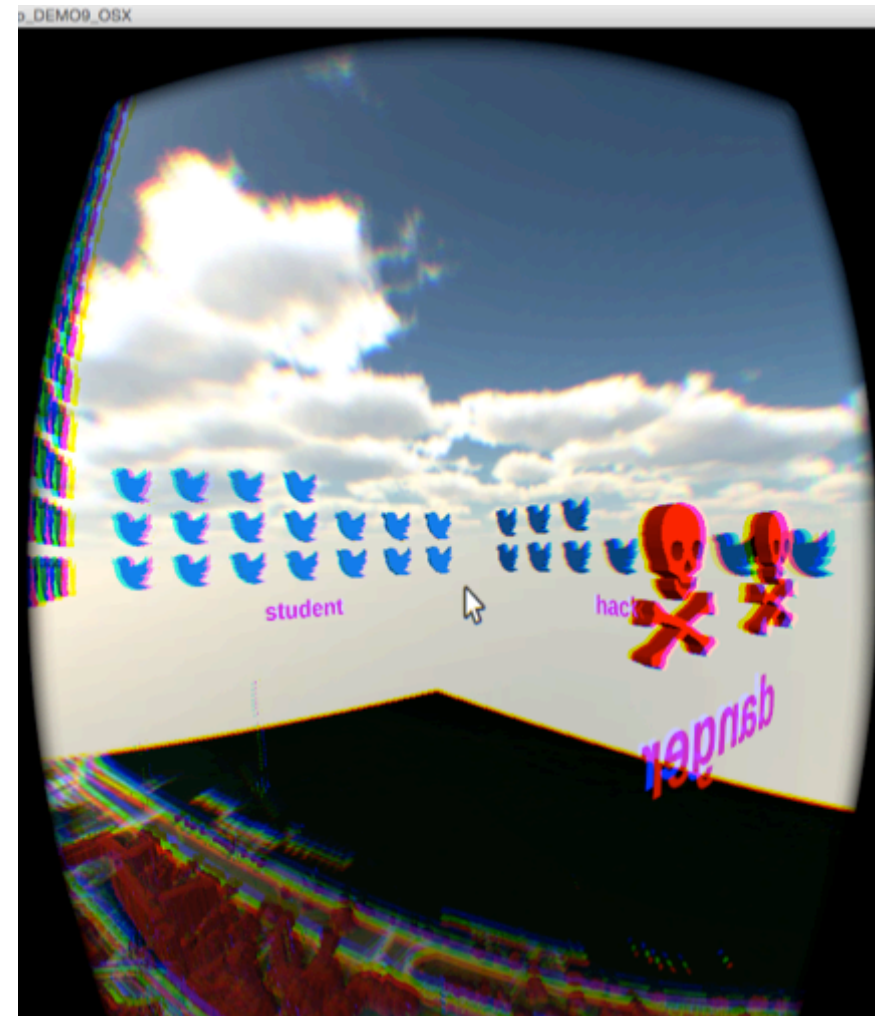
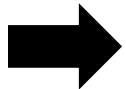
- Navigation/Exploration
- Cluster Recognition
- Filtering
- Identification
- Selection
- **Querying**
- Relationships
- Tracking





Analytical Tasks

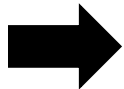
- Navigation/Exploration
- Cluster Recognition
- Filtering
- Identification
- Selection
- **Querying**
- Relationships
- Tracking





Analytical Tasks

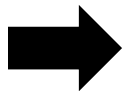
- Navigation/Exploration
- Cluster Recognition
- Filtering
- Identification
- Selection
- **Querying**
- Relationships
- Tracking





Analytical Tasks

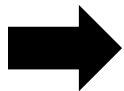
- Navigation/Exploration
- Cluster Recognition
- Filtering
- Identification
- Selection
- Querying
- **Relationships**
- Tracking





Analytical Tasks

- Navigation/Exploration
- Cluster Recognition
- Filtering
- Identification
- Selection
- Querying
- **Relationships**
- Tracking





Analytical Tasks

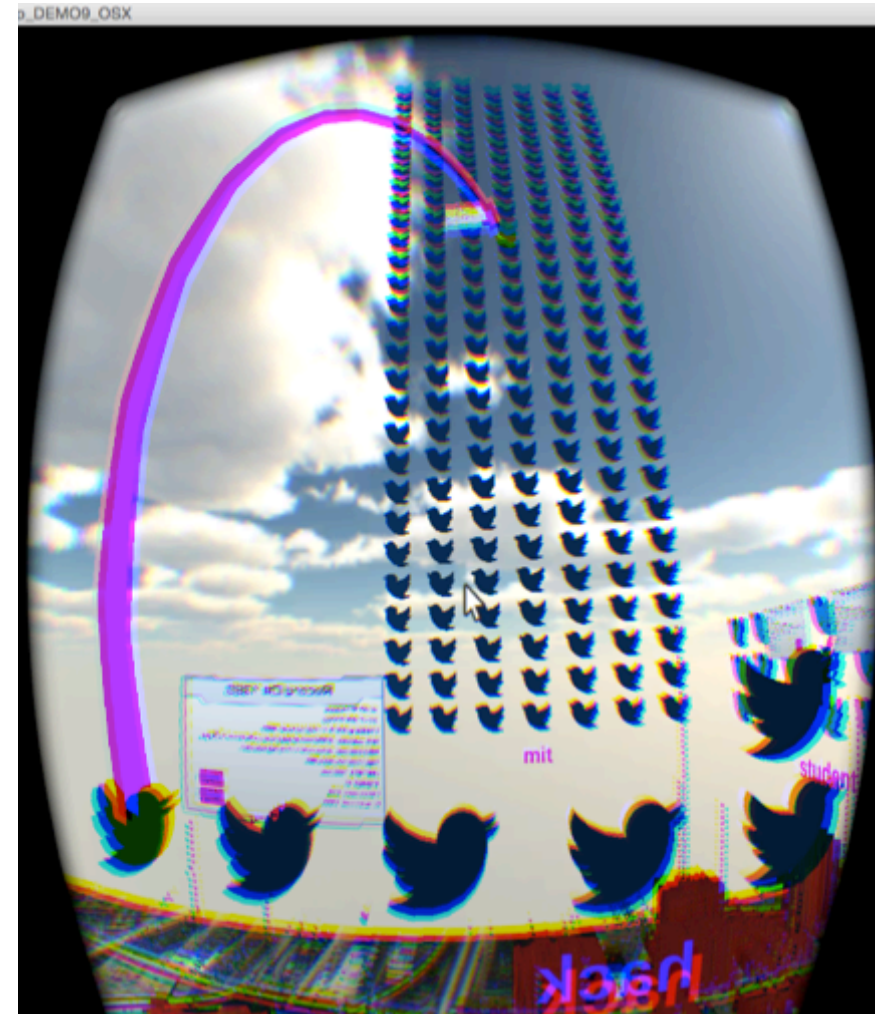
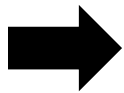
- Navigation/Exploration
- Cluster Recognition
- Filtering
- Identification
- Selection
- Querying
- ➔ **Relationships**
- Tracking





Analytical Tasks

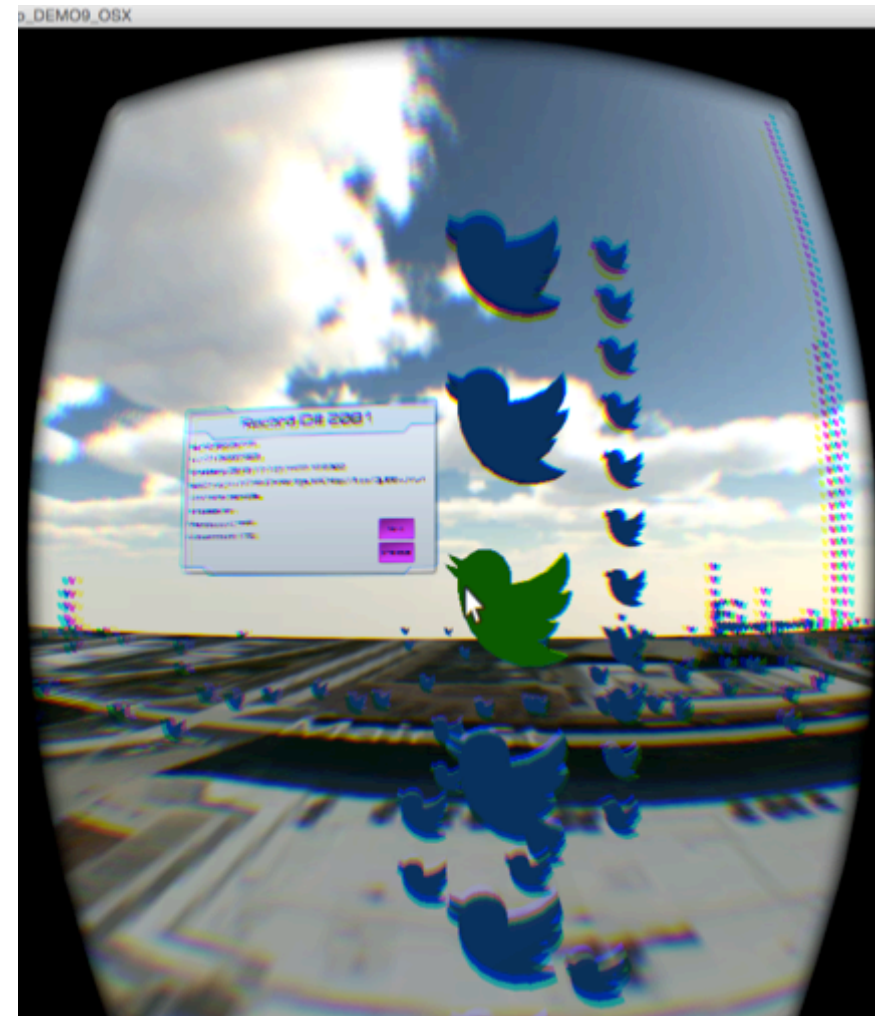
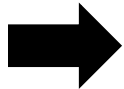
- Navigation/Exploration
- Cluster Recognition
- Filtering
- Identification
- Selection
- Querying
- **Relationships**
- Tracking





Analytical Tasks

- Navigation/Exploration
- Cluster Recognition
- Filtering
- Identification
- Selection
- Querying
- Relationships
- **Tracking**





Analytical Tasks

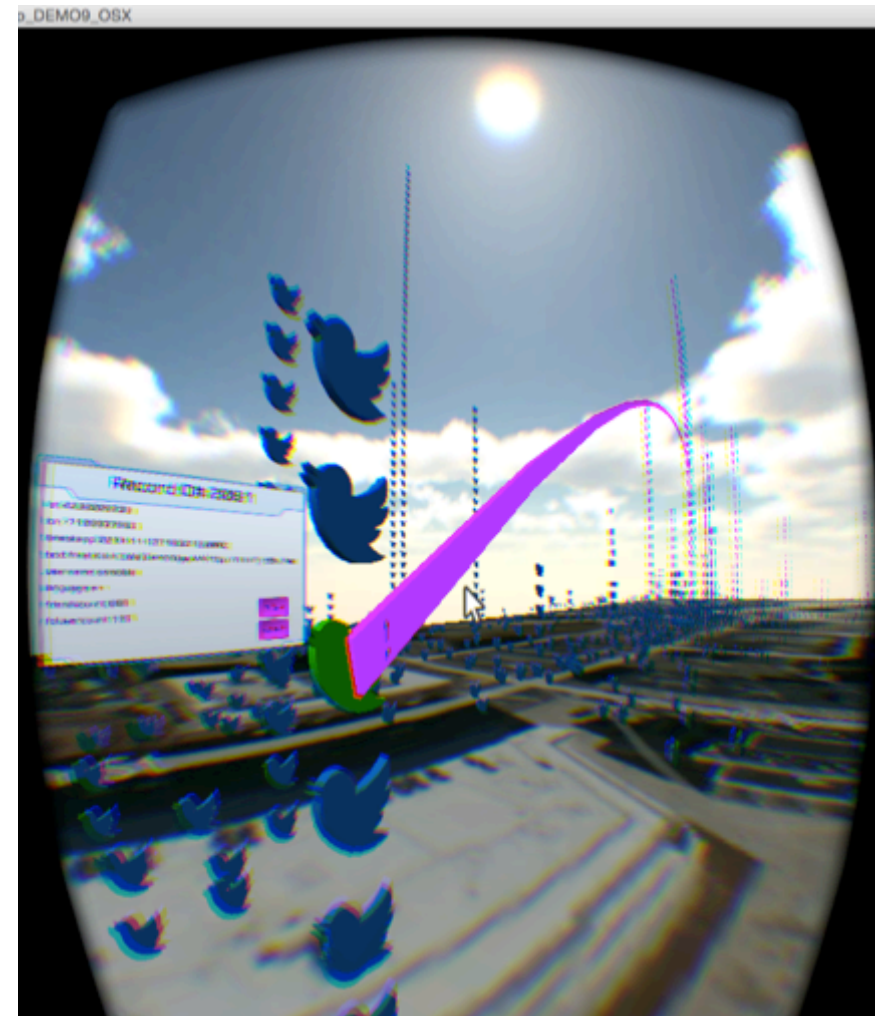
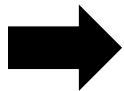
- Navigation/Exploration
- Cluster Recognition
- Filtering
- Identification
- Selection
- Querying
- Relationships
- **Tracking**





Analytical Tasks

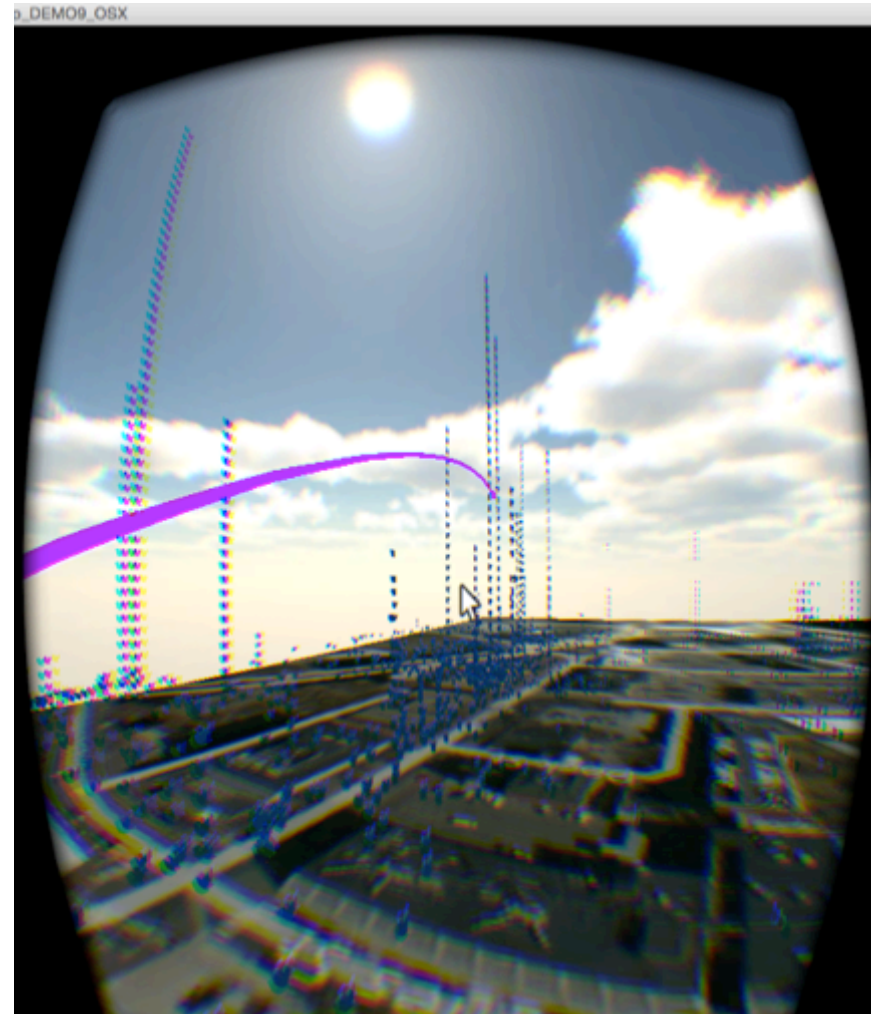
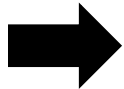
- Navigation/Exploration
- Cluster Recognition
- Filtering
- Identification
- Selection
- Querying
- Relationships
- **Tracking**





Analytical Tasks

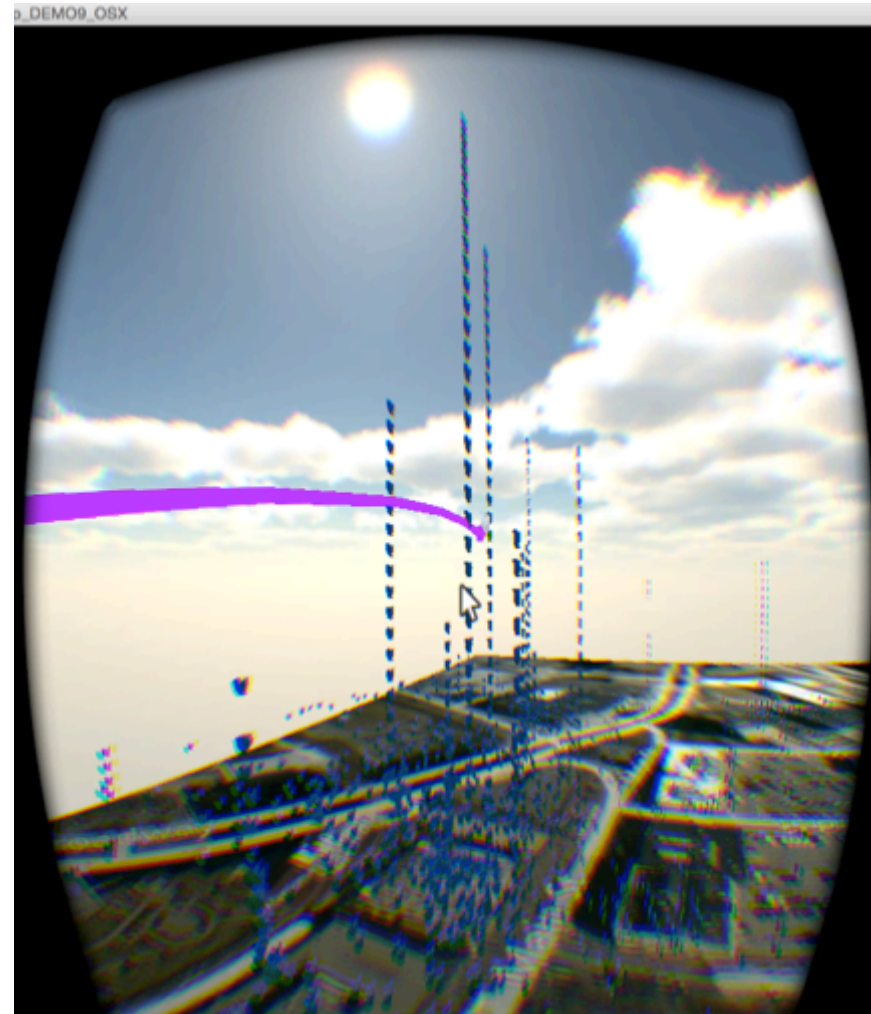
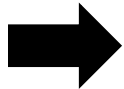
- Navigation/Exploration
- Cluster Recognition
- Filtering
- Identification
- Selection
- Querying
- Relationships
- **Tracking**





Analytical Tasks

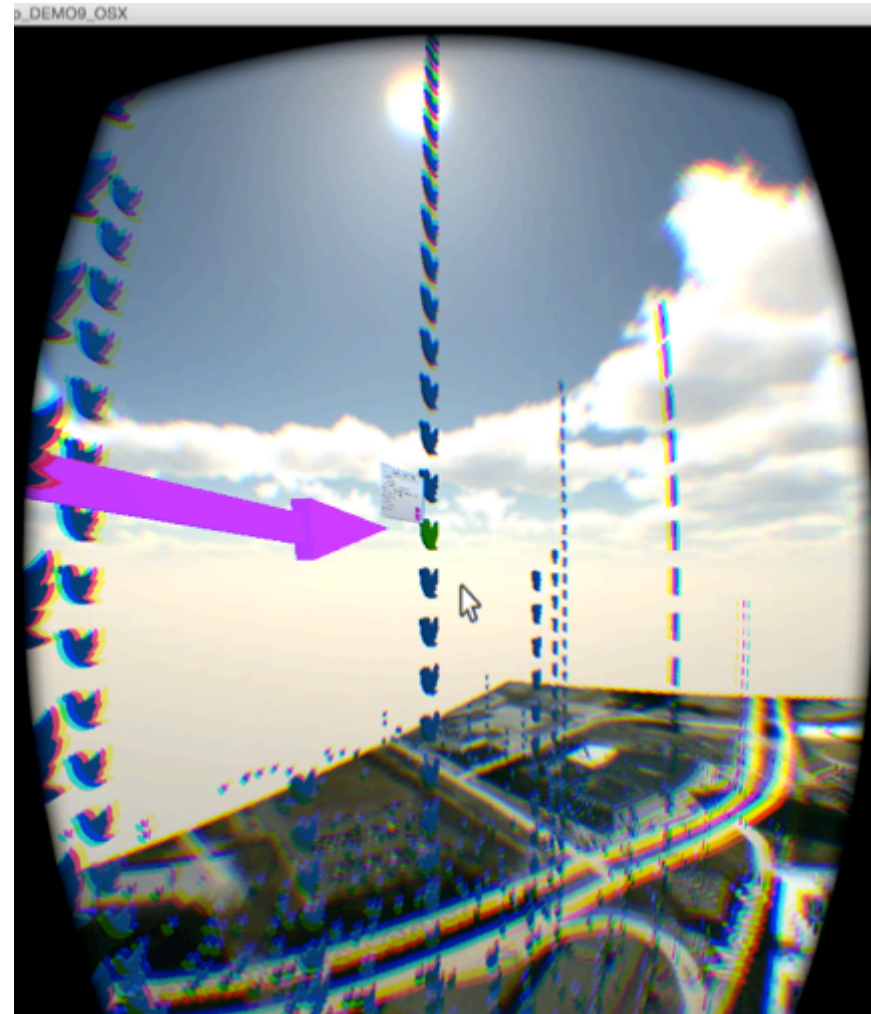
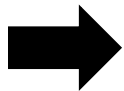
- Navigation/Exploration
- Cluster Recognition
- Filtering
- Identification
- Selection
- Querying
- Relationships
- **Tracking**





Analytical Tasks

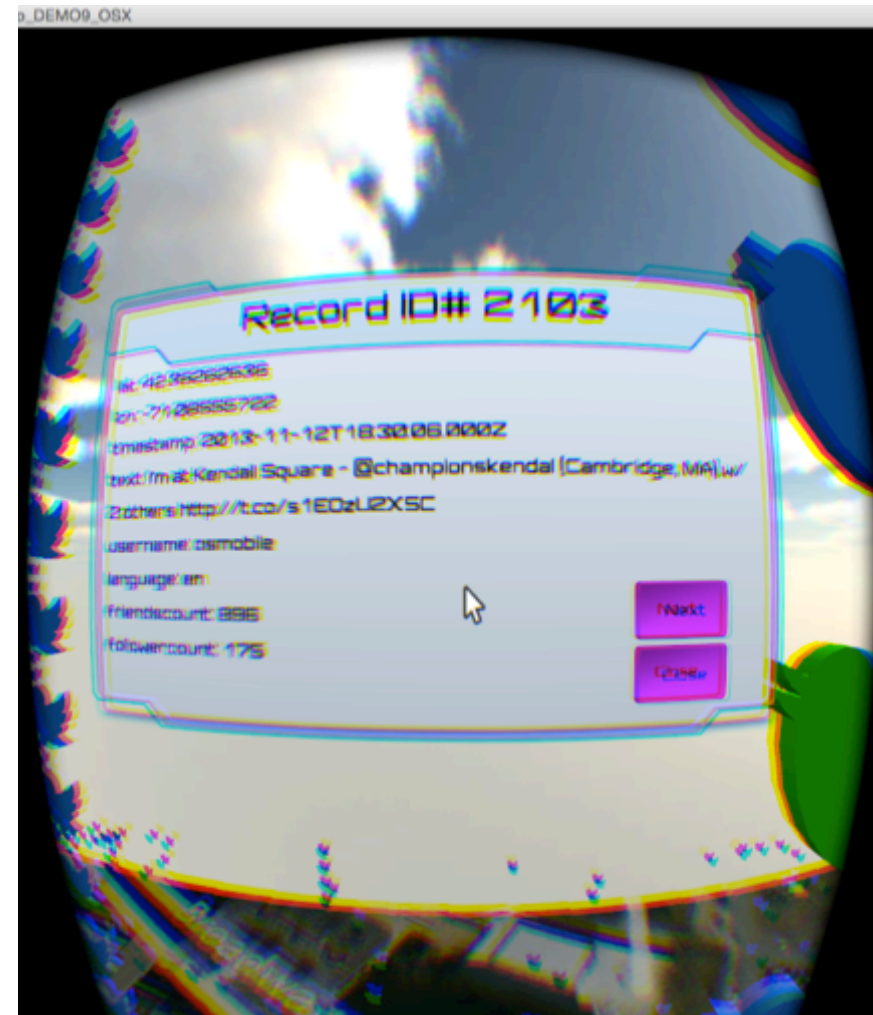
- Navigation/Exploration
- Cluster Recognition
- Filtering
- Identification
- Selection
- Querying
- Relationships
- **Tracking**





Analytical Tasks

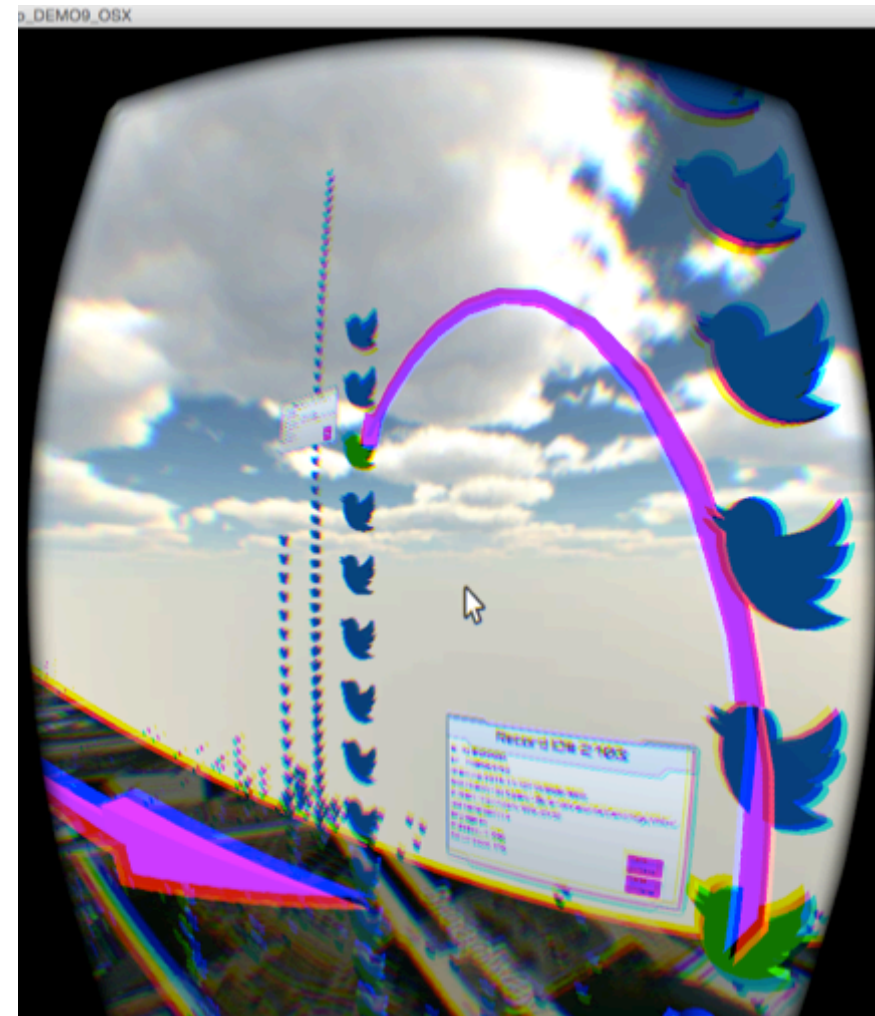
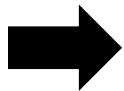
- Navigation/Exploration
- Cluster Recognition
- Filtering
- Identification
- Selection
- Querying
- Relationships
- **Tracking**





Analytical Tasks

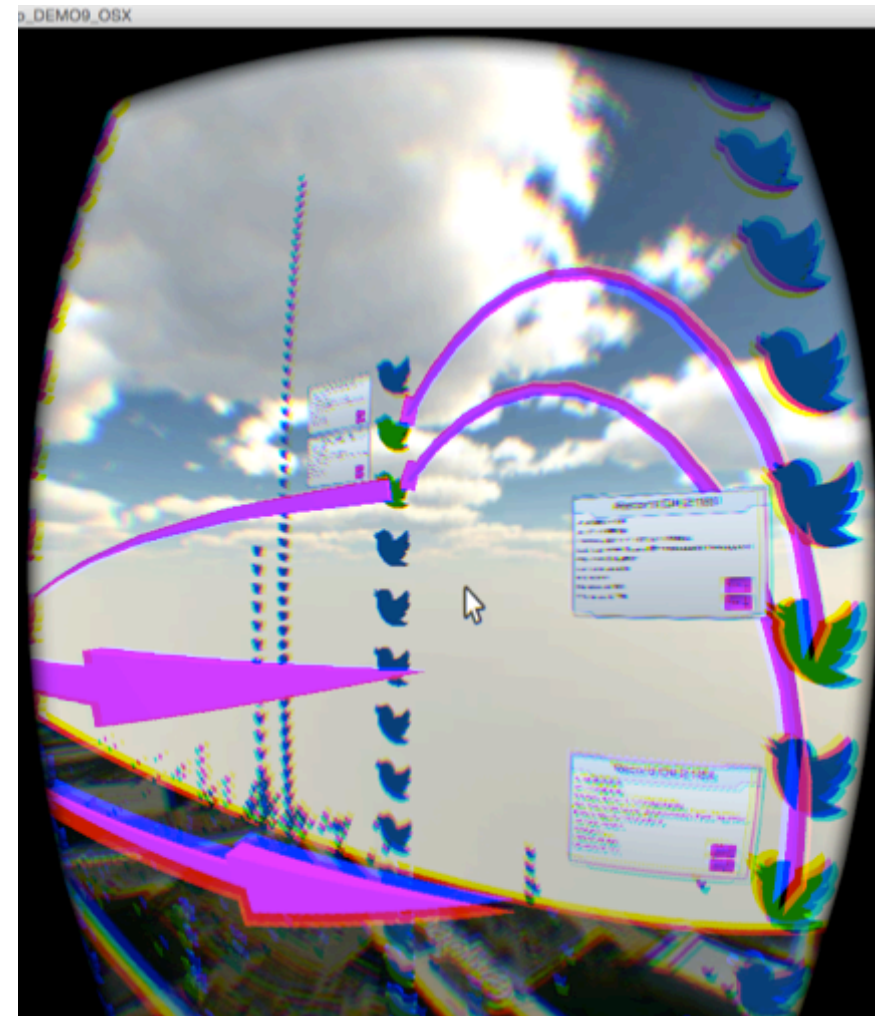
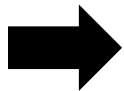
- Navigation/Exploration
- Cluster Recognition
- Filtering
- Identification
- Selection
- Querying
- Relationships
- **Tracking**





Analytical Tasks

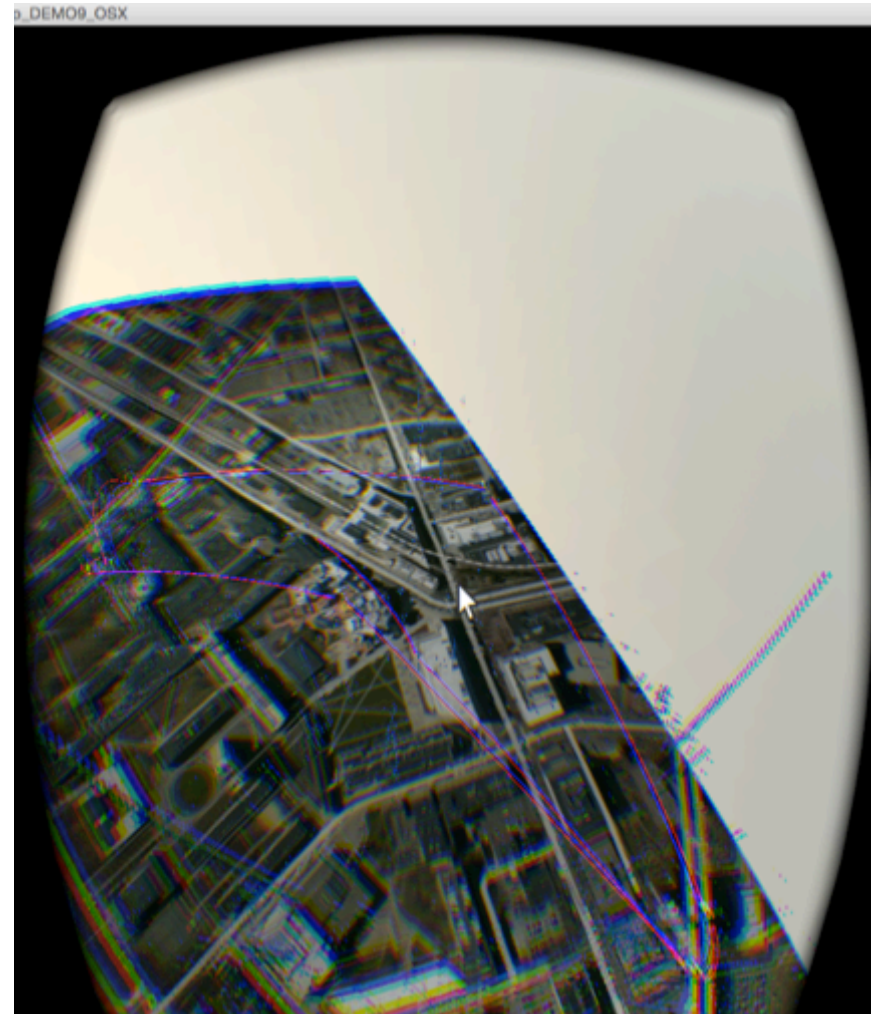
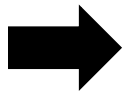
- Navigation/Exploration
- Cluster Recognition
- Filtering
- Identification
- Selection
- Querying
- Relationships
- **Tracking**





Analytical Tasks

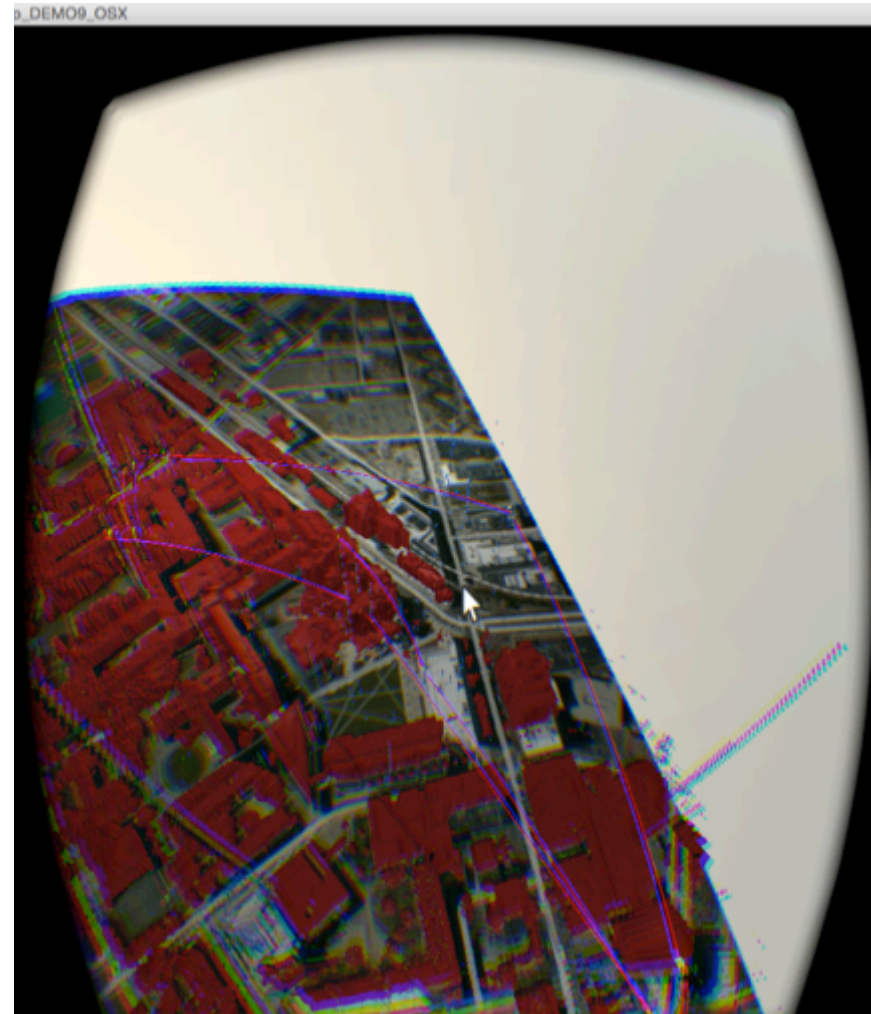
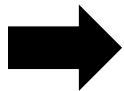
- Navigation/Exploration
- Cluster Recognition
- Filtering
- Identification
- Selection
- Querying
- Relationships
- **Tracking**





Analytical Tasks

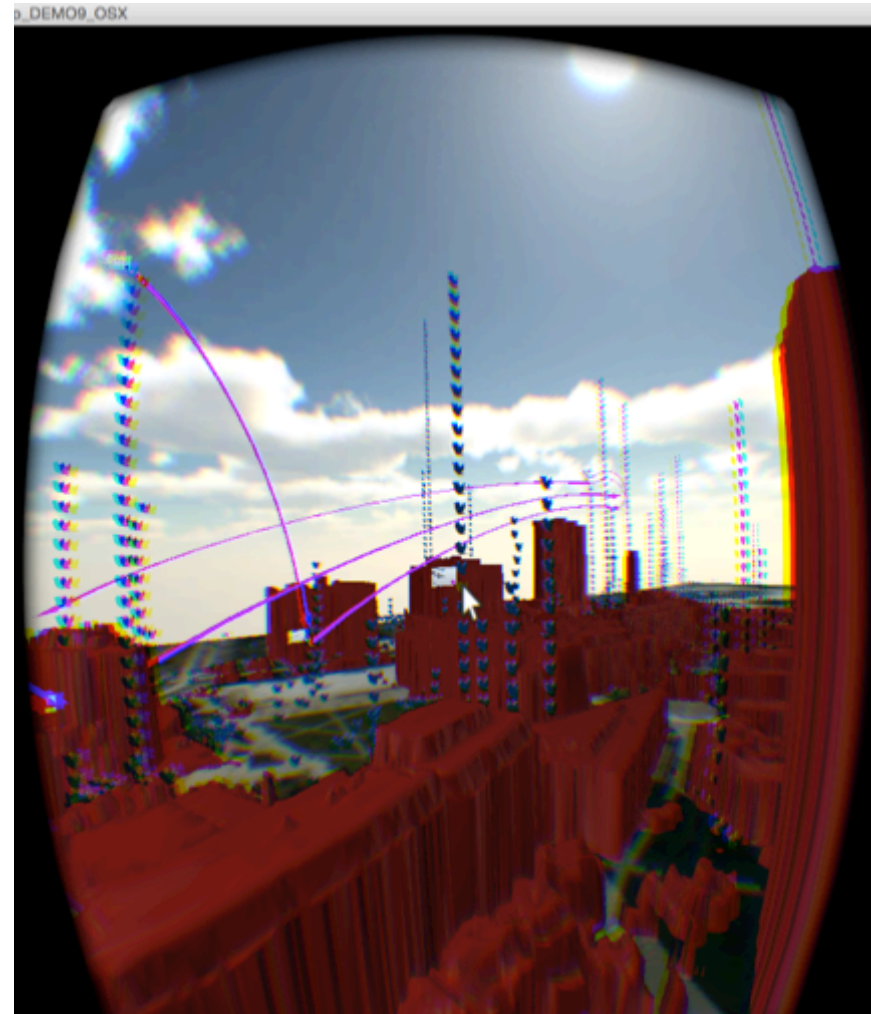
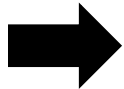
- Navigation/Exploration
- Cluster Recognition
- Filtering
- Identification
- Selection
- Querying
- Relationships
- **Tracking**





Analytical Tasks

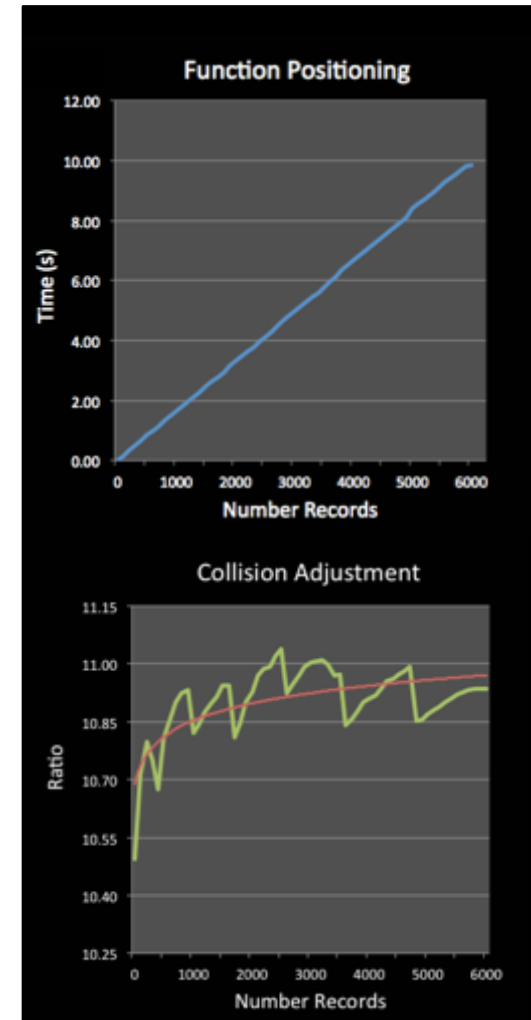
- Navigation/Exploration
- Cluster Recognition
- Filtering
- Identification
- Selection
- Querying
- Relationships
- **Tracking**





Challenges

- **Rendering Models**
- **Camera LOD**
- **Occlusion Layers**
- **Processing – Frame Rate**
- **Collider Activation**

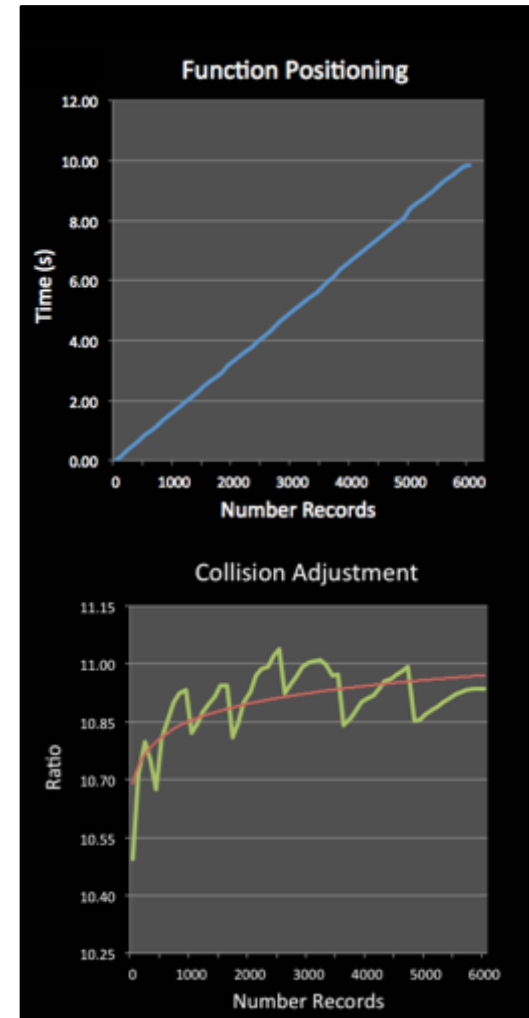




Challenges

- **Rendering Models**
- **Camera LOD**
- **Occlusion Layers**
- **Processing – Frame Rate**
- **Collider Activation**

- **Problem: Further instantiation leads to more collisions**
- **Solution: Convert to using geohashed locations**





Outline

- Introduction
 - Big Data
 - Visualization
 - Virtual Reality
 - Overview of Approach
- Approach
 - Data Extraction
 - Game Configuration
 - Utilized Technologies
- Results
 - Virtual Environment
 - Analytical Tasks
 - Challenges
- ➔ • **Summary, Future Work and Next Steps**



Summary

Goal

- Promote improved visualization and interaction with Big Data
- Achieve better situational awareness

Approach

- Collect and Visualize Twitter Data at MIT
- Utilize Unity3D Game Engine, showcase emerging technologies

Results

- Immersive virtual environment
- Data overlaid on geospatial domain
- Dynamically perform analytical tasks
- Ongoing/Future Work
 - Performance enhancements/optimizations
 - Usability & GUI Improvement
 - Additional Analytics
 - Live Data



Backup
